

Golden State Dressage
Warm-up/Cool-down
&
CDS Northern Junior Championships
July 27-29, 2018
Murieta Equestrian Center
Rancho Murieta, CA

PRIZE LIST

CDS Northern Junior Championships - Pages 6-9

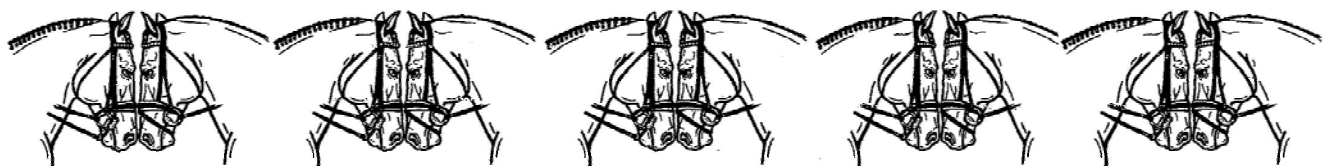
NDPC Classes - Page 13

USDFBC Classes - Page 12

USEF Qualifiers - Page 5

Warm-up/Cool-down Classes - Pages 10-11

Recognitions: USEF, USDF, CDS



THE OFFICAL HOTEL OF THE MURIETA EQUESTRIAN CENTER



THE
MURIETA
INN AND SPA

STEPS FROM THE MURIETA EQUESTRIAN CENTER

**OFFERING DISCOUNTED SHOW
ROOM RATES**

Welcome

Golden State Dressage Show IV

7/27/2018– 7/29/2018

Group Code: EQE-GSD4

Book Now

<https://themurietainn.com/reservations/?pid=12512>

DURING THE SHOW DINE AT

THE
GATE

THEMURIETAINN.COM

THE MURIETA INN AND SPA | 916.354.3900
7337 MURIETA DRIVE | RANCHO MURIETA, CA

SHOW HELD AT:
MURIETA EQUESTRIAN CENTER
7200 LONE PINE DRIVE, RANCHO MURIETA, CA 95683

If you have not attended one of the shows at this facility, you have been missing the pleasure of showing your horse at a location that offers four covered arenas, shaded stabling, an excellent Café and much more.

Friday offers the opportunity for **SPORT HORSES** to qualify for the United States Dressage Federation Breeders Championships (USDFBC) awards.

Full slate of dressage classes every day.

Weekend classes feature **USEF QUALIFIERS**.

AND...we welcome the **CDS Northern Junior Championships!**

GREAT FOOD! WONDERFUL ARENAS!
GORGEOUS GROUNDS! COME AND ENJOY!

DIRECTIONS:

From the South: Hwy 99 N. to Dillard Rd (Elk Grove area), to Jackson Hwy (Hwy 16), right on Jackson Hwy to Lone Pine Dr. where you turn right and then right again into MEC. **NOTE: Those who are travelling up I-5 can access Hwy 99 in Stockton - watch for the connecting road.**

From the West: I-80 East to I-5 South to Hwy 50 East. Hwy 50 to Sunrise. Right on Sunrise to Jackson Hwy (Hwy 16). Left on Jackson Hwy to Lone Pine Dr. in Rancho Murieta. Turn right on Lone Pine and right into MEC Center.

From the North: I- 5 to Hwy 50 East, then follow directions above.

From the East: Hwy 50 from the Tahoe area, exiting to the left on Sunrise Blvd (Rancho Cordova area), then follow the directions to Highway 16. It is also possible to come from the Reno area on Interstate 80, exiting on Sierra College Blvd. (which becomes Hazel). Then go West on Highway 50, South on Sunrise Blvd, East on Jackson Highway to MEC.

Trailers - Please use Second Entrance

ENTRIES CLOSE: JULY 18, 2018

PREMIUM UPDATES, RIDE SCHEDULES AND SCORES POSTED ON:

WWW.GOLDENSTATEDRESSAGE.COM

ON-LINE ENTRIES AVAILABLE: WWW.EQUESTRIANENTRIES.COM

SCHEDULES AND SCORES POSTED ON WWW.FOXVILLAGE.COM

QUESTIONS: DAVENPORT@SABER.NET

WARM-UP/COOL-DOWN DRESSAGE

JULY 27-29, 2018

CDS NORTHERN CALIFORNIA JUNIOR/YOUNG RIDER CHAMPINSHIPS SPORT HORSE BREED SHOW - FRIDAY, JULY 27

SPORT HORSE BREED SHOW IS QUALIFIER FOR THE WEST COAST USDFBC

Entries Close: July 18, 2018

JUDGES:

C. Carter Bass	USEF "S" (Dressage), YH and USEF "R" (Sport Horse)"
Lisa Schmidt	USEF "S" (Dressage), YH
Charlotte Trentleman	USEF "S" (Dressage), YH
Plus additional, if entries warrant	

TECHNICAL DELEGATE:

Maureen Van Tuyl California "R"

MANAGER CONTACT:

Connie Davenport - davenport@saber.net 530.274.1323 until July 24 - 530.277.0820 after

LICENSEE:

Golden State Dressage, Inc. #289822 Principal: Constance N. Davenport

SECRETARY:

Jan Oakes

EMT:

Art Fingerle

VIDEO:

Julie Smith

PHOTOGRAPHER:

TamaraWithTheCamera

VETERINARIAN:

TBA (Posted at office)

FARRIER:

TBA (Posted at office)

RVS: May be rented from Gold Country RV (Bruce): 916. 531.9912

Note that cost of RV does not include RV space; please submit \$40 per day with entry.

GOLF CARTS: May be rented from Gipson Golf Carts: 916.806.0920

HOTELS:

SHOW SPONSOR – WALKING DISTANCE TO GROUNDS

The Murieta Inn and Spa 916.354.3900

7337 Murieta Drive, Rancho Murieta, CA 95683

Pet Friendly

PLEASE REFER TO ADVERTISEMENT FOR RATES AND CODE FOR THIS SHOW

Please request horse show or Golden State Dressage rates. The number of rooms available may be limited; make reservations EARLY. If you participate in hotel award programs, there are representatives of many major chains in Rancho Cordova.

Marriott Rancho Cordova 916. 638.1100 - 11211 Point East Drive, Rancho Cordova, CA 95742

Hyatt Place 916.635.4799 – 10744 Gold Center Drive, Rancho Cordova, CA 95670 PET FRIENDLY!

La Quinta (916) 638-1111 – 11131 Folsom Blvd., Rancho Cordova, CA 95670 PET FRIENDLY!

Marriott Residence Inn 916.851.1550 – 2779 Prospect Park Drive, Rancho Cordova, CA 95670 PET FRIENDLY!

OFFICIAL QUALIFYING CLASSES FOR THE:

2018 Markel/USEF Young and Developing Horse Dressage Championships

2018 Children Dressage National Championship

2018 USEF Pony Rider Dressage National Championship

2018 AGCO/USEF Junior and Young Rider Dressage National Championships

2018 USEF Young Adult 'Brentina Cup' Dressage National Championship presented by Dressage Today

Current editions of tests will be used – check www.usef.org, www.usdf.org and www.fei.org for updates

SATURDAY, JULY 28

- 61 FEI Junior Team Test *Great American Insurance/USDF Q
USEF Qualifying
- 62 FEI Young Rider Team Test *Great American Insurance/USDF Q
USEF Qualifying
- 63 FEI Young Rider Grand Prix
USEF Qualifying
- 64 USEF Developing Prix St. Georges Test (edition 2012): 7-9 year old horses
USEF Qualifying
- 65 USEF Developing Grand Prix Test (edition 2012): 8-10 year old horses
USEF Qualifying
- 66 FEI Pony Team Test - (*Measurement Card required - must be submitted with entry*)
USEF Qualifying
- 67 FEI Children Team Test
USEF Qualifying

SUNDAY, JULY 29

- 70 FEI Junior Individual Test
USEF Qualifying
- 71 FEI Junior Freestyle
USEF Qualifying
- 72 FEI Young Rider Individual Test
USEF Qualifying
- 73 FEI Young Rider Freestyle
USEF Qualifying
- 74 USEF Young Horse 4 Yr Old Test
Markel/USEF Young Horse Qualifying
- 75 FEI Young Horse 5 Yr Old Test
Markel/USEF Young Horse Qualifying
- 76 FEI Young Horse 6 Yr Old Test
Markel/USEF Young Horse Qualifying
- 77 FEI Pony Rider Individual Test (*Measurement Card required - must be submitted with entry*)
USEF Qualifying
- 78 FEI Pony Rider Freestyle (*Measurement Card required - must be submitted with entry*)
USEF Qualifying
- 79 FEI Children Individual Test
USEF Qualifying

COST OF EACH CLASS: \$ 85



Welcome to the CDS Northern Junior Championships Pages

Congratulations to those who have qualified for the Championships and welcome to those who are entering the Classes that are open to all Juniors and Young Riders

Competitors are welcome to enter warm-up classes on Friday, July 27 in the open show that is running concurrently.

The Junior/Young Rider Championship and Special Competitions are listed on the next three pages.

Many fun and educational events are planned for this very special show. Watch for Exhibitor Information letters that will keep you up to date.

Grand Champion Award designed especially for those who have qualified to enter the Junior/Young Rider Championship Classes and presented with the thought of helping competitors prepare for any Championships they may enter in the future. To facilitate this Division, this year we are offering a **free "Jog Instruction"** class on Thursday evening, with details to come in future correspondence.

CDS JUNIOR/YOUNG RIDER CHAMPIONSHIPS

CODE OF CONDUCT

Failure on the part of any participant, exhibitor or parent to honor the Code of Conduct may result in elimination. As such, we agree to the following:

Sport is something done for the fun of doing it.

Good manners are fundamentally important in Society and Sport

Fair and friendly competition develops Sportmanship

All facets of sport should reflect the positive virtues of courage, patience, good temper and unselfishness.



CDS JUNIOR/YOUNG RIDER CHAMPIONSHIP CLASSES

Classes are open to Qualified Championship participants only ~
Halters to 1st place, Backpacks to 2nd place, Saddle Pads to 3rd place.
 Sashes to Champion and Reserve, Ribbons through 10th.
 (Ribbons to **10th** for first test of the Classes.)

Entry Fee: \$140.



Qualifying scores must be completed by July 22 and received via scanned email to the Show Secretary no later than 4:00 PM on Monday, July 23. Scores received after this date/time will not be counted toward Championship Qualification. No exceptions. Entry fees will be refunded, less a \$30 fee, to those failing to qualify and who choose not to participate in other classes.

All Championship tests must be ridden from memory. Whips may not be carried in Championship classes.
At no time after the horse arrives on the grounds is the horse to be ridden by anyone other than the rider entered.

Class 705AB: CDS JR/YR Finals for the Training Level Champion 14 Years and Under (Training Level 2 & 3)

CDS Wine Country Perpetual Trophy

Class 706AB: CDS JR/YR Finals for the Training Level Champion 15-17 Years (Training Level 2 & 3)

Graciela's Perpetual Trophy

Class 707AB: CDS JR/YR Finals for the Training Level Champion 18-21 Years (Training Level 2 & 3)

CDS Valley Oaks Chapter Trophy

Class 708AB: CDS JR/YR Finals for the First Level Champion 14 Years & Under (First Level 2 & 3)

CDS Napa Valley Perpetual Trophy

Class 709AB: CDS JR/YR Finals for the First Level Champion 15 – 17 Years (First Level 2 & 3)

Degas Trophy

Class 710AB: CDS JR/YR Finals for the First Level Champion 18 – 21 Years (First Level 2 & 3)

CDS East Bay Chapter Trophy

Class 711AB: CDS JR/YR Finals for the Second Level Champion (Second Level 2 & 3)

CDS Marin Chapter

Class 712AB: CDS JR/YR Finals for the Third Level Champion (Third Level 2 & 3)

Franklin Downton Perpetual Trophy

Class 713AB: CDS JR/YR Finals for the Fourth Level Champion (Fourth Level 2 & 3)

Eleanor Langlois Trophy

Class 714AB: CDS JR/YR Finals for the FEI JR Champion 14 – 18 Years JR Team & JR Individual)

Gable Perpetual Trophy

Class 715AB: CDS JR/YR Finals for the FEI YR Level Champion 16 – 21 Years (YR Team & YR Individual)

San Francisco Peninsula Chapter Perpetual Trophy

Class 716AB: CDS JR/YR Finals for the FEI Level Champion (**Q** allowed for PSG, I-1, I-2, GP)

List the two FEI tests to be ridden on Entry - same test may be ridden twice.

Q
possible on
appropriate
tests

!

Training - Fourth:
Tests 3,
YR Team, JR Team,
PSG, I-1, I-2, GP.
Freestyles: First-
Fourth,
I-1 and GP

ADD

\$15

EXTEND THE CHAMPIONSHIP EXPERIENCE!

Overall Grand Championship computation will be 60% (dressage tests average), 35% (freestyle), 5% (jog skills). Entry Fee: \$70
 Enter a Freestyle test of the same level as the Championship classes, as follows (considered HDC for those who are not previously qualified to participate in a freestyle):

Class 717AB: Training Level Freestyle/Jog

Class 718AB: First Level Freestyle/Jog

Class 719AB: Second Level Freestyle/Jog

Class 720AB: Third Level Freestyle/Jog

Class 721AB: Fourth Level Freestyle/Jog

Class 722AB: FEI JR Freestyle/Jog

Class 723AB: FEI YR Freestyle/Jog

Class 724AB: Interm. I Freestyle/Jog

Class 725AB: Grand Prix Freestyle/Jog

In addition to the freestyle, rider will be judged on in-hand jog skills (jogging the same horse entered in the Championship Class)

Creswick Perpetual Trophy to the high score Freestyle (Classes 717-725)



CDS JUNIOR/YOUNG RIDER SPECIAL CLASSES

~ No qualifying scores are required for entry ~



US Pony Club Competition – Entry Fee: \$60

Open to current members of the United States Pony Clubs. USPC membership required.

Class 800: Training Level, Test 2 (USEF)

Class 801: First Level, Test 1 (USEF)

Class 802: First Level, Test 3 (USEF) **Q possible**

Doug Downing Perpetual Trophy will be awarded to the competitor with the highest overall percentage of Classes 800, 801 and 802.

Combined Training Competition – Entry Fee: \$60

Open to all members of USEA who have competed in a Recognized Horse Trials within the past 12 months. Copy of the dressage score sheet for this competition must be submitted with entry, along with USEA membership card.

Class 803: Novice Division – Training Level, Test 2 (USEF) **Denville Kanani Perpetual Trophy**

Class 804: Training Division – First Level, Test 1 (USEF)

Class 805: Preliminary Division – First Level, Test 2 (USEF)

Brookside Perpetual Trophy will be awarded to the competitor with the highest overall percentage of Classes 803, 804 and 805.

JUNIOR/YOUNG RIDER QUADRILLE - Entry Fee: \$60 per team

Open to all Juniors and Young Riders. Enter and pay for team on the Entry Form of one of the team members. List all team members and horses.

Class 806: USDF Quadrille Introductory Level

Class 807: USDF Quadrille Training Level

Class 808: USDF Quadrille First Level

Class 809: USDF Quadrille Second Level

Class 810: USDF Quadrille Freestyle (state Level)

JUNIOR/YOUNG RIDER PAS DE DEUX - Entry Fee: \$60 per pair

Open to all Juniors and Young Riders. Enter and pay for the pair on the Entry Form of one of the pair. List the name of the partner and horse. **Margaret Chaquette Bell Memorial Perpetual Pas de Deux Trophy**

Class 811: USDF Pas De Deux (state level)

EQUITATION - Entry Fee: \$45

Open to all Juniors and Young Riders and do not count toward the requirements of the Team Competition.

Class 818: Dressage Seat Equitation, 13 and under

Class 819: Dressage Seat Equitation, 14-18

EQUITATION TROPHIES

Windfarer Perpetual Trophy will be awarded to the highest scoring individual in 13 and under category. from Classes 700 and 818 in the JR/YR Championship section and 51, 52, 53 in the national show classes.

Dressage Equitation 14 and older Perpetual Trophy will be awarded to the highest scoring individual in this category from Classes 700 and 819 in the JR/YR Championship section and 54, 55, 56 in the national show classes.



CDS JUNIOR/YOUNG RIDER TEAM COMPETITION CLASSES



~ No qualifying scores are required for entry ~

Ribbons through tenth 702, 703, 704
Rider ribbons through sixth for each Equitation (per level)
Ribbons through tenth for overall team results
Special Award to each member of winning team in a division.
Entry Fees: **\$105 per rider**

You may enter as a Team or by yourself. If you are not already on a team, you will be matched with other individual riders or partial teams entering the same division. If you cannot be matched up with a team, your entry fees will be refunded or you may transfer to the open show classes. Horse/rider combination may participate on one team only. Horse may participate only once on a team.

Teams may be made up by 3 to 4 members. Give your team name and the names of known team members. Teams must have names at the time of entry or a name will be assigned by management. Teams with three members only, the fourth score will be the average of the three rider's scores.

Each competitor will ride one dressage test at his level, plus a Dressage Equitation test and a Written/Oral Theory test. All required tests will be averaged by percentages – 1/3 each.

All scores from each team member will be counted. No scores will be dropped. Total points from each team member will be added together and divided by the number of team members to compute team placing. Elimination from one test does not eliminate that rider from the Team Competition. Elimination will be scored as a zero for that test.

Whips and readers are permitted for these classes.

DIVISIONS MAY BE CHANGED OR COMBINED DEPENDING ON ENTRIES.

DIVISION A: TRAINING LEVEL RIDERS

Class 700: Dressage Seat Equitation (Sat)

Class 701: Dressage Theory (Sat)

Class 702: Training Level, Test 2 (Sun)

DIVISION B: FIRST LEVEL RIDERS

Class 700: Dressage Seat Equitation (Sat)

Class 701: Dressage Theory (Sat)

Class 703: First Level, Test 2 (Sun)

DIVISION C: SECOND LEVEL RIDERS

Class 700: Dressage Seat Equitation (Sat)

Class 701: Dressage Theory (Sat)

Class 704: Second Level, Test 2 (Sun)

Equitation Class Protocol

Times will be posted and riders will compete in appropriate sized groups for safety. Riders on two teams ride only once; score will count for both teams. Riders are required to:

- ✓ Check in with the paddock steward prior to the assigned times.
- ✓ Stay in the area so that further instructions from the paddock steward can be heard.
- ✓ Any person interfering with the paddock stewards or TD during equitation warm-ups may incur elimination of the rider involved from that class.

CLASS LIST

Add AA (USEF Amateur Card mandatory), JR/YR, Open as appropriate

FRI	SAT	SUN	TEST		\$
201	301	401	Training Level, Test 1		\$60
202	302	402	Training Level, Test 2		\$60
203	303	403	Training Level, Test 3	Q	\$60
204	304	404	Rider Test of Choice		\$60
205	305	405	Introductory, Test A		\$60
206	306	406	Introductory, Test B		\$60
207	307	407	Introductory, Test C		\$60
210	310	410	Q Test of Choice (Tr-IV - Tests 3 only)	Q	\$60
280	380	480	Q Test of Choice (First-IV - Freestyles)	Q	\$60
270	370	470	Freestyle - Training Level		\$70
211	311	411	First Level, Test 1		\$60
212	312	412	First Level, Test 2		\$60
213	313	413	First Level, Test 3	Q	\$60
271	371	471	Freestyle - First Level	Q	\$70
221	321	421	Second Level, Test 1		\$60
222	322	422	Second Level, Test 2		\$60
223	323	423	Second Level, Test 3	Q	\$60
272	372	472	Freestyle - Second Level	Q	\$70
231	331	431	Third Level, Test 1		\$60
232	332	432	Third Level, Test 2		\$60
233	333	433	Third Level, Test 3	Q	\$60
273	373	473	Freestyle - Third Level	Q	\$70
241	341	441	Fourth Level, Test 1		\$60
242	342	442	Fourth Level, Test 2		\$60
243	343	443	Fourth Level, Test 3	Q	\$60
274	374	474	Freestyle - Fourth Level	Q	\$70
250	350	450	FEI - Test of Choice		\$70
251	351	451	Prix St. Georges	Q	\$70
252			USEF Developing Horse PSG		\$70
253	353	453	Intermediaire I	Q	\$70
254	354	454	Intermediate A or B Test of Choice		\$70
255	355	455	Intermediaire II	Q	\$70
256			Young Rider Grand Prix (16-25)		\$70
257	357	457	Grand Prix	Q	\$70
258	358	458	Grand Prix Special		\$70
259			USEF Developing Horse Grand Prix		\$70

Q = Great American Insurance/USDF Qualifying.

Add \$15 to class fee and review membership and horse registration requirements prior to entering.

Horse may enter two consecutive levels only – even if more than one rider.

Horse limited to three tests per day (Intro-IV) & two per day (FEI).

FRI	SAT	SUN	TEST		\$
275	375	475	Freestyle - Intermediaire I	Q	\$70
276	376	476	Freestyle - Grand Prix	Q	\$70
260			FEI Junior Team	Q	\$70
261			FEI Junior Individual		\$70
262			FEI Junior Freestyle		\$70
263			FEI Young Rider Team	Q	\$70
264			FEI Young Rider Individual		\$70
265			FEI Young Rider Freestyle		\$70
266	366	466	FEI Children Team		\$70
267	367	467	FEI Children Individual		\$70
268	368	468	FEI Q TOC (Q listed tests only)	Q	\$70
269	369	469	FEI Q FS TOC (Q listed tests only)	Q	\$70
902	903	904	ParaEquestrian Team Test of Choice		\$70
906	907	908	ParaEquestrian Individual Test of Choice		\$70
910	911	912	ParaEquestrian Freestyle Test of Choice		\$70
81	82	83	Materiale - 3 YO Fillies		\$45
84	85	86	Materiale - 3 YO Colts/Geldings		\$45
87	88	89	Materiale - 4 YO Mares		\$45
90	91	92	Materiale - 4 YO Stallions/Geldings		\$45
93	94	95	Materiale - 5 YO Mares		\$45
96	97	98	Materiale - 5 YO Stallions/Geldings		\$45
51		53	Dressage Seat Equitation - 13 & under		\$40
54		56	Dressage Seat Equitation - 14-18		\$40
57	58	59	Dressage Seat Equitation - Adult Amateur		\$40
294	394		USEF and FEI Young Horse TOC		\$70
200	300	400	Exhibition Class		\$60
			Lead-line, Pas de deux, Quadrille		
208	308	408	OPPORTUNITY: Training, Test 1		\$50
209	309	409	OPPORTUNITY: Training, Test 2		\$50
600	700	799	Eventing TOC – will be divided into separate classes if entries warrant – may enter maximum 3 tests per day		\$60

Q = Great American Insurance/USDF Qualifying.

Add \$15 to class fee and review membership and horse registration requirements prior to entering.

Horse may enter two consecutive levels only – even if more than one rider.

Horse limited to three tests per day (Intro-IV) & two per day (FEI).

National Dressage Pony Cup Classes on separate page.
USEF Qualifying Classes on separate page.
Sport Horse Breed Classes on separate page.
CDS Northern Junior Championships in a separate section.

DRESSAGE SPORT HORSE BREED SHOW

West Coast Qualifying for the USDF Breeders Championship Series Final

Judge: C. Carter Bass Safety Officer: Janette Oakes

FRI

Current Year Foal Classes - \$60 per class -Championship Class, No Fee

- 511 Fillies of current year, with or without dam, foal only to be judged
512 Colts/Geldings of current year, with or without dam, foal only to be judged
513 **Current Year Foal Championship - **Qualifier for USDF Breeder Championship**
- 1st and 2nd place horses in 511, 512

Young Horse/Sport Horse Classes - \$60 per class - Championship Class, No Fee

- 518 Yearling Filly Prospects
519 Two-Yr Old Filly Prospects
520 Three-Yr Old Filly Prospects
521 Yearling Colt & Gelding Prospects
522 Two-Yr Old Colt & Gelding Prospects
523 Three-Yr Old Colt & Gelding Prospects
524 **Filly Championship (Qualifier for USDFBC - 1st and 2nd placed horses in 518-520)
525 **Colt & Gelding Championship (Qualifier for USDFBC - 1st & 2nd placed horses in 521-523)

Mature Horse/Breeding Classes - \$60/per class - Championship Class, No Fee

- 526 Four-year-old Broodmares with or without foals. Mares only to be judged.
527 Four-year-old Maiden and Yeld mares
528 Five-year-old and older Broodmares with or without foals. Mares only to be judged.
529 Five-year-old and older Maiden and Yeld mares
530 Four-year-old Stallions
531 Five-year-old Stallions
532 Six-year-old and older Stallions
533 **Mare Championship (Qualifier for USDF Breeder) first two places from classes 526-529
534 **Stallion Championship (Qualifier for USDF Breeder) first two places from classes 530-532

*****Champion and Reserve are eligible to compete in the Series Final. If either or both have already qualified for the Series Final Class, only the third place horse will be invited. Additionally, any horse receiving a 77% or better in its age/sex class will be eligible to compete in the final.***

Group Classes - \$60 per group – horses not required to have shown in individual In-Hand classes

- 538 Get of Sire – Entered under sire's name. Two or three of his get; entered under sire's name. Get only to be judged.
Multiple ownership is permitted and owners must be listed for each horse.
539 Produce of Dam – Entered under dam's name. Two or three offspring, with or without dam. Offspring only to be judged.
Offspring only to be judged. Multiple ownership is permitted and owners must be listed for each horse.

Handler Classes - \$60/per class

- 536 Adult Amateur Handlers (Current USEF Amateur certification required.)
537 Junior/Young Rider Handlers

**NO HORSE, INCLUDING FOALS,
MAY BE SHOWN LOOSE**

NDPC NORTHERN CALIFORNIA PONY SERIES AWARDS

NDPC Show Awards: Ribbons will be given first through sixth place in all pony only classes. After degree of difficulty per test is added, a ribbon and certificate will be mailed to the Champion Pony. This only applies to the Pony TOC classes, not freestyle classes.

NDPC Series Awards: The awards will be broken down into the following divisions: Open, AA, Jr/YR. Champion and Reserve Champion will be awarded in each division. The weighted scores will then be averaged to calculate the winners. You must show in at least four Pony Only TOC classes (freestyle classes are not eligible).

NDPC Freestyle Series Awards: The awards will be broken down into the following divisions: Open, AA, Jr/YR. Champion and Reserve Champion will be awarded in each division. The weighted scores will then be averaged to calculate the winners. Freestyles will use the highest degree of difficulty at each level. You must show in at least four Pony Only Freestyle classes to be eligible for these awards.

NDPC Year-End Awards: All tests and freestyles ridden in Pony Classes will automatically be entered in NDPC Year-End Awards.

Degree of Difficulty Chart

Level	Degree of Difficulty Points Added Per Level
Introductory Level	0, 0, .5
Training Level 1, 2, 3	1, 1.5, 2
First Level 1, 2, 3	3, 3.5, 4
Second Level 1, 2, 3	5, 5.5, 6
Third Level 1, 2, 3	7, 7.5, 8
Fourth Level 1, 2, 3	9, 9.5, 10
FEI (PSG, I-1, I-2, GP)	12
FEI Pony Test	6

Awards for NDPC Northern California Pony Series will be mailed concluding the final show.

National Dressage Pony Cup showcases the exceptional talent, training, and commitment of ponies, their owners, breeders, trainers, and riders in the art and sport of dressage. NDPC encourages competition at every level, for riders of any ability of age, and ponies of any breed or mix of breeds to compete and enjoy their experience. NDPC partners with USDF shows around the country to offer our Partner Show Program. These shows will offer at least one 'pony only' class, but possibly more and an opportunity to receive your USEF Pony Measurement card. You do not need to be a member to compete in a Partner Show. All scores in 'pony only' classes will automatically be entered in our Year-End Awards Program, where you will be competing with ponies across the country.

Learn more at www.dressageponycup.com

NDPC NORTHERN CALIFORNIA PONY SERIES CLASSES:

FRI SAT SUN

245	345	445	Pony TOC – Training-Fourth	\$60	Q allowed on Tests 3 only
246	346	446	Pony TOC – FEI Level	\$70	Q allowed on PSG, I-1, I-2, GP, JRT, YRT
247	347	447	Pony TOC – USDF Freestyles	\$70	Q allowed on First-Fourth
248	348	448	Pony TOC – FEI Freestyles	\$70	Q allowed on I-1 and GP freestyles

Q = Great American Insurance/USDF Qualifying: add \$10 to class fee

GOLDEN STATE DRESSAGE

~

CLASS AWARDS

Ribbons - through Fifth
Award - to First in all Classes

Status (Open, Adult Amateur, J/YR) must be marked on the entry.
Default is Open, if not marked.
USEF Adult Amateur card required for Adult Amateur status.

HIGH PERCENTAGE AWARDS

Daily High Percentage Ribbons
Freestyles, Pas de Deux, Quadrille, Equitation and Materiale do not count

Open, Adult Amateur, Junior/Young Rider

SHOW HIGH PERCENTAGE

Open, Adult Amateur, Junior/Young/Rider, Freestyle



IALHA HighPoint Award.

Sponsored by Lyric Dressage (Allison Mathy)

Requirements: Any horse registered with the International Andalusian Lusitano Horse Association (IALHA) - pure bred and 1/2 bred Andalusians and Lusitanos Rider and owner need not be a member but horse must have **valid IALHA registration papers that are submitted with entry**. Highest score in the Open, Adult Amateur or JR/YR Divisions.

SHOW FEES

Checks payable to: Golden State Dressage, Inc.

Note: Payments made to third party entry processing entities do not constitute payment in full until such time as the funds are received by Golden State Dressage, Inc.

VISA/MC available. Please see entry form.

Office	\$36.50/horse
CDFA	\$5/horse/show
CDS TGF	\$3/horse/show
USEF	\$23/horse/show (includes \$15 Drug and Medication and \$8 Administration)

Stabling	\$175 - Thursday through Sunday - includes two bales of shavings
Bedding	\$10/bale subject to change
Alfalfa Hay	\$30/bale subject to change
Grass Hay	\$30/bale subject to change

Haul-In	\$35/horse/day (for all horses not stabled) Note: haul-in is assessed for non-stabled horses for every day the horse is on the grounds. Subject to double the fee if not declared and paid on entry.
---------	--

Non-competing/schooling horse	\$50/horse for stabled horses, plus office fees. \$100/day/horse for horses not stabled, plus haul-in, office, CDFA, CDS
-------------------------------	---

RV/space/night	\$40
----------------	------

CLASSES:

Special Qualifying Classes	\$85	USEF Qualifiers
Intro	\$60	
Tr-Fourth	\$60	add \$10 for Great American/USDF Qualifying when appropriate
Rider Tests	\$60	
Opportunity	\$60	
Para Equestrian	\$70	
FEI	\$70	add \$10 for Great American/USDF Qualifying when appropriate
Young Horse	\$70	
All Freestyles	\$70	add \$10 for Great American/USDF Qualifying when appropriate
Materiale	\$45	
Equitation	\$40	
DSHB		see class list

Refund processing fee	\$75	show cancellation prior to closing
Refund processing fee	\$50	deducted from any legitimate refund, post show
Refund processing fee	\$25	per class (must meet requirements in rules)
Refund processing fee	\$25	per stall (must meet requirements in rules)
Class add/change	\$10	per class
Bad check/credit card	\$30	per occurrence, or bank charges - whichever is greater
Pony Measurement	\$100	per measurement
Internet Search	\$25	per instance, if applicable

USEF Show Pass	\$45	rider, owner, trainer, coach per show (if applicable)
USEF Membership	\$80	rider, owner, trainer, coach (if applicable)
USEF Annual Horse	\$95	per horse (if applicable)
USEF Life Horse	\$300	per horse (if applicable)
USDF Non-member	\$35	rider, owner per show (if applicable)
USDF Participating Membership	\$90	rider, owner (if applicable)
USDF HID	\$35	per horse (if applicable)
USDF Life Horse	\$115	per horse (if applicable)
USDF Horse Upgrade to Life	\$80	per horse (if applicable)
USDF Affidavit	\$ 5	per Affidavit (if applicable)

Sponsorship	\$100	per class (FEI and Junior Championship classes excepted)
Sponsorship	\$150	per class (Junior Championship Classes excepted)

GENERAL RULES & INFORMATION

CONDITIONS OF ENTRY

- ✓ Every class offered herein which is covered by the rules and specifications of the current USEF Rule Book will be conducted and judged in accordance therewith. *Quadrille will follow the rules of USDF.*
- ✓ Management reserves the right to arrange for additional judges and to cancel, combine or amend any class, including but not limited to class awards, scheduling and location.
- ✓ Management reserves the right to refuse, accept conditionally or to cancel any entries, disqualify riders or exhibitors, prohibit exhibition of entries, without claim to damages.
- ✓ Show Management reserves the right to interpret all questions and conditions in regard to, or arising out of, or incident to the show, without claims for damages or recourse of any kind. All questions not covered by these rules and regulations shall be decided by the Show Management and such determinations shall be final.
- ✓ Owner/Agent/Participant agrees that every horse entered, or which they bring to the show grounds, will be subject to the rules of the Horse Show management. However, Show Management will, in no case, be responsible for any loss or damage that may occur to any horse entered or on the grounds, and it shall be a condition of entry that each exhibitor agrees to defend, indemnify and hold harmless the United States Equestrian Federation, the United States Dressage Federation, the California Dressage Society, Golden State Dressage, Inc., any additional recognizing organizations, the facility at which the event is held (showgrounds), the horse show and its management, employees, volunteers and independent contractors for any loss or accident to his horse, horses or equipment which may occur.
- ✓ All Owners and Exhibitors will be held responsible for any damage incurred by them, their agents, employees or animals to stall buildings and other properties on the show grounds and shall be billed accordingly. All bills for veterinary, farrier services and feed are due and payable during the show. The management reserves the right to deduct any unpaid veterinary, farrier and feed bills from premium, stake or prize money, or refunds due the exhibitor. Any exhibitor not meeting obligations to the official veterinarian, farrier or feed supplier will be termed an undesirable exhibitor and entries from that exhibitor may not be accepted at subsequent shows.
- ✓ Competitors are responsible for all **INSURANCE** for themselves, employees, owners, horses, etc. Competitors are personally responsible for damages to third parties caused by themselves, their employees, agents or horses. They are strongly advised to take out third-party insurance providing full coverage for participation in equestrian events at home and abroad and to keep the policy current.
- ✓ Current USEF, FEI, and USDF tests will be used.
- ✓ USEF General Rules define the protest procedure.

ENTRIES - SCHEDULING - RIDING TIMES

- ✓ Entries will be accepted on a first-come basis and must include all fees, membership and horse registration proofs, signatures and payment. *Numbers will not be released until this process is complete; entries without payment in full may be returned.* Entries that are received, complete with payment, signatures and proofs will have priority over faxed or emailed entries. Entries received by fax or email and accepted are considered to be legal contracts and are subject to all of the rules of the show, including post/late entry fees. If the show has extended the courtesy of accepting a late, faxed or emailed entry, the responsible party will be liable to pay all class, office, stable and other fees. Withdrawing at any time will not excuse the responsible party from paying all of the applicable fees. Those who do not comply with this will be turned in to the recognizing authorities and no future entries will be accepted until the matter has been resolved.
- ✓ Management will close the show when it is full and place excess entries on a wait list. Entries that have arrived after the show is declared full and prior to the printed entry closing date will not be subject to late fees. Any entry postmarked after the published entry closing date is considered a post entry and all post entry and late fees will apply.
- ✓ Post entries allowed on a space available basis only, prior to the start of the class and after all forms have been completed, signatures obtained and fees paid. Office fee of \$10/class applied to all post entries. All change requests must be in writing and accompanied by a blank check or cash to cover the cost of the class(es) requested. If the change is granted, the usual class and post entry fees will be charged. **PLEASE NOTE: Once the show is scheduled, the fee paid for a scratched class will not be applied to a requested class unless the scratch time is filled.**
- ✓ Copies of all membership cards and horse recording certificates are required. The requirements of USEF, USDF and CDS will be strictly followed and the show will collect fees for any individual or horse registration that is required and cannot be proven by presentation of the current card. To enter the Adult Amateur Division, the USEF Membership card MUST indicate Amateur and the individual must reach the age of 22 in the current year.

If you do not submit proof of Adult Amateur status, you will be entered in the Open division. If you request to switch to Adult Amateur classes after entry closing, all post entry and/or change fees will be applied if this requires that you be rescheduled.

- ✓ Classes will be scheduled to accommodate the judges, riders and management. Rider scheduling preferences, if noted on the entry, will be indulged when possible. The 50 minutes between rides rule will be observed for riders of multiple horses. Requests for specific break parameters will be considered, but not guaranteed. Classes will not necessarily be scheduled in order of difficulty.
- ✓ **Provisional ride times will be EMAILED AND POSTED ON WWW.FOXVILLAGE.COM.** It is the obligation of the entrant to contact the Show Secretary at davenport@saber.net if times have not been received. Scheduling conflicts must be emailed to the Show Secretary 48 hours prior to the start of the show. **RIDERS SHOULD BE AWARE THAT IF THE NEED ARISES, THE SHOW MANAGEMENT CAN CHANGE RIDE TIMES AS PER USEF GR 830.**

Next day's revised schedule is posted every evening at the show office and on www.foxvillage.com.

- ✓ An Exhibitor's Letter with updates may be included with the riding times. Information in this document is considered to be as binding as any other rule or procedure stated in this Prize List.

SHOWGROUNDS- RV PARKING

- ✓ DOGS must be on leash at all times and owners must be able to provide proof of current rabies vaccination. Dog owners failing to comply with this rule may be subject to penalty under Show Rules and USEF Rule Book Chapters 6 and 7. The issuance of warning cards is a possibility. Additionally, there is a fine of \$100 per occurrence and owner may be refused entry into future shows. Any damage whatsoever that is attributed to the dog is the complete financial and any other responsibility of the owner of the dog.
- ✓ All classes are planned to be held in the large (20mx60m) arena unless the small arena is mandated by the test. Appropriate tests may be held in the small arena IF there are scheduling or weather problems. Footing is sand and/or sand/composition in all competition and warm-up arenas.
- ✓ The assigned bridle number must be worn or displayed at all times when the horse is on the grounds and/or out of the stall.
- ✓ Use of the warm-up arenas is limited to those who are entered in the show and, at the discretion of Show Management, will be restricted to those warming up for class(es) in progress when there is congestion. **NO ONE ON FOOT WILL BE ALLOWED IN THE DRESSAGE WARM-UP AREAS AT ANY TIME.** There will be a designated lunge area and it may be subject to posted hours of availability.
- ✓ Food will be available on the show grounds.
- ✓ RV hook-ups are available; please use the RV reservation form.

STABLING - GROUNDS

- ✓ Owner/Agent/Participant agrees that show management is merely providing stabling for the convenience of the participant and management and sponsoring organizations shall have no responsibility whatsoever for any injury, loss, damage, etc., as a result of using said stabling. Owner/Agent/Participant agrees to indemnify, defend, and hold Show Management, their officials, officers, directors, employees, agents, personnel, volunteers and affiliated organizations harmless from any loss, damage or claims as a result of said use. **Owner/Agent/Participant assumes all care, custody, and control with regard to this use.**
- ✓ The Stabling Request MUST be submitted and paid for with entry. **Once ordered, there is no refund for stalls.** There is a limited number of permanent box stalls with roofs and doors. These will be assigned first come/first served. The remaining stalls are 10 x 10 portables with roofs and doors. Stabling will be assigned in order of receipt of entry, with consideration for requests made on the entry. Fees apply whether the stall is used for a horse, tack, feed or grooming. There is no day use stabling available. Stabling is available from Thursday through Sunday.
- ✓ Wash racks and showers are available.
- ✓ Grounds/Haul-in Fee will be charged for all horses not stabled. This fee applies to any horse brought onto the grounds, even if the horse remains on the horse trailer or is ridden or led onto the grounds.
- ✓ No straw is allowed. Cost of repair for any damage or defacement of property will be charged to the Exhibitor. **EXHIBITOR IS RESPONSIBLE TO INSPECT STALL AND REPORT PRE-EXISTING DAMAGE PRIOR TO USING STALL.**
- ✓ Please deposit all manure at the end of the barn aisles or as designated by the facility. Waste materials must be disposed of properly, in accordance with State law and the rules of USEF.
- ✓ **NON-COMPETING HORSES.** Each non-competing horse must have a signed release, wear an assigned number, must observe the rules governing the use of the warm-up areas and must pay any required fees, including stabling, haul-in and grounds fees. Any horse brought onto the grounds, including the parking lots, is subject to the rules of the show. This includes horses that never leave a horse trailer. Violations of this rule will result in double the fees due. Note: Priority in availability, location and type of stabling will be given to competing horses.
- ✓ Any balance due at the end of the show will be billed and subject to a billing fee. Payment must be made immediately upon receipt of the bill. Non-payment will result in the individual being turned in to the sponsoring organizations, in addition to legal ramifications.

REFUNDS - CANCELLATIONS

- ✓ **REFUND REQUESTS MUST BE IN WRITING AND SIGNED.** Refunds for cancellations made prior to stated entry closing date will be made in full, less a processing fee. After the entry closing date, any refund will incur a show refund fee and refunds will be made **ONLY** for classes that are filled from the wait list. The following conditions must be met: 1) a veterinarian's certificate or rider's medical excuse must be submitted, 2) notification must be in writing to the Show Office **PRIOR** to the show day(s) in question. A per class processing fee will be deducted from the refund. Refund lists are maintained in order of date and time of scratch. Refunds will be applied to the list, starting with the earliest valid scratch. **There will be no refund for stabling once it is ordered. There will be no refunds of any sort (including but not limited to haul-in, drug, class, office and association fees) for same day scratches or no shows. These fees will be considered a contribution to the show and your signature on the entry verifies that this is understood as a condition of entry.**
- ✓ Checks returned by the bank or credit cards that are refused will be assessed a minimum fee or the bank fees (whichever is higher) upon the first return and will not be run through a second time. A cashier's check or cash will be needed to clear the entry.
- ✓ **CANCELLATION: In the event that all or part of the competition is cancelled due to a storm, accident or any other emergency, the competition will not be responsible for refunding entry, stabling, office or any other fees,**

AWARDS - PRIZE MONEY - FREESTYLES - MISCELLANEOUS

- ✓ **AWARD CEREMONY** procedures will be updated and posted at the Show Office. Show management reserves the right to amend award information by making notification in subsequent advertising and communications such as exhibitor letters and show programs.
- ✓ Scored tests will be given only to riders or their agents and only after the results are finalized and the class is placed. Any disputes concerning scores, divisions entered (AA, JR/YR, Open), and/or placings must be brought to the attention of the Show Office within one hour of the end of the show day. Scores and placings become final at that time.
- ✓ **FREESTYLES:** It is the responsibility of the exhibitor to have the cued music at the announcer's stand at the start of the ride and a representative at the stand to tell the announcer when to start and stop the music. A sound check will be conducted at each show; please make arrangements directly with the announcer. Exhibitors are responsible for retrieving their own music after the class.
- ✓ Except for USEF/USDF Championship classes and for FEI Pony Riders, FEI Junior, FEI Young Rider and FEI Para-Equestrian Freestyles, in order to enter a freestyle class at any level, a horse/rider combination must have received a minimum score of 60% in the highest test of the declared

freestyle level or any test of a higher level at a Federation Licensed or **FEI recognized Dressage Competition or "open" Dressage class (i.e. open to all breeds) at a Federation Licensed Competition** held prior to the competition where the horse/rider combination is entered to ride a freestyle class. A photocopy of the test verifying eligibility must be submitted with the entry for a freestyle class.

DR129.9 Board Approved: 1/19/2013

STATE BORDER CROSSINGS:

✓ The most recent information available on documents necessary for transporting horses across state lines is available at the following numbers: Nevada Department of Agriculture - (775) 688-1180 and California Department of Agriculture - (916) 654-1447. Be sure to ask if there are any prohibitions against feed as well.

JUNIORS

✓ All minors/juniors must be supervised by their parent/guardian or authorized agent at all times while at or on the show grounds, whether riding or on foot. The parent/guardian or authorized agent shall assume all responsibility to protect juniors from any injury, damage, harm and/or loss and shall indemnify, defend and hold show management, its employees, independent contractors and volunteers, the facility at which the event is held, Golden State Dressage, Inc. and all affiliated organizations harmless therefrom.

✓ USEF GR1301.5: Minors who do not have a valid driver's license which allows them to operate a motorized vehicle in the state in which they reside will not be permitted to operate a motorized vehicle of any kind, including, but not limited to, golf carts, motorcycles, scooters, or farm utility vehicles, on the competition grounds of licensed competitions. Minors who have a valid temporary license may operate the above described motorized vehicles as long as they are accompanied by an adult with a valid driver's license. The parent(s), legal guardian(s), or individual who signs the entry blank as a parent or guardian of a minor operating a motorized vehicle in violation of this rule are solely responsible for any damages, claims, losses or actions resulting from that operation. Violations of this rule will be cause for sanctions against the parent(s), guardian(s) and/or trainer(s) who are responsible for the child committing the offense. Penalties may include exclusion of the child, parent(s), guardian(s), and/or trainer(s) from the competition grounds for the remainder of the competition and charges being filed against any of the above individuals in accordance with Chapter 6. Wheelchairs and other mobility assistance devices for individuals with disabilities are exempt from this rule.

ALL COMPETITORS

✓ *From the time horses are officially admitted to the competition grounds by competition management, anyone mounted on a horse a any time on the competition grounds, including non-competing riders, riders on non-competing horses, and those competing in all classes and tests, including Para-Equestrian tests, must wear protective headgear as defined by this rule and otherwise in compliance with GR801. Any rider violating this rule at any time must immediately be prohibited from further riding until such headgear is properly in place. Protective headgear is defined as a riding helmet which meets or exceeds ASTM (American Society for Testing and Materials)/SEI (Safety Equipment Institute) standards for equestrian use and carries the SEI tag. The harness must be secured and properly fitted. Unless jackets are waived, while in the competition ring, exhibitors wearing protective headgear must wear a short, dark jacket, dark tailcoat (only permitted for tests above Fourth Level), or Armed Services or police uniform (if eligible), dark hat covers (where applicable) and must otherwise conform to DR120 (see GR801).*

✓ It is the responsibility of the rider, or the parent or guardian or trainer of the junior exhibitor to see to it that the headgear worn complies with appropriate safety standards for protective headgear intended for equestrian use, and is properly fitted and in good condition, and the Federation, Show Committee, and Licensed Officials are not responsible for checking headgear worn for such compliance.

✓ The Federation and Golden State Dressage, Inc. make no representation or warranty, express or implied, about any protective headgear, and cautions riders that death or serious injury may result despite wearing such headgear as all equestrian sports involve inherent dangerous risk and as no helmet can protect against all foreseeable injuries.

✓ Competition management shall place a minimum of one sharps container per each competition, whether or not stabling is provided. Additionally, at least one sharps container per fifty occupied stalls for the disposal of needles and other disposable sharp instruments in convenient locations in barns housing competition horses. It is competition management's responsibility to replace such containers when full and dispose of them properly. Competition management may fine any individuals including trainers, owners, exhibitors, or their agents up to \$100 for improper disposal of needles or other sharp disposable instruments. Competition management will place a notice of this requirement either in its prize list or on a specific handout given to trainers on check in at the competition. If local law has different requirements, local law will prevail. Competitions failing to comply with placing the required number of containers on the show grounds will be considered in violation of the rules and may be subject to penalty as determined by the CEO or Executive Director and/or the Hearing Committee.

✓ *In locations with high average heat and humidity on the date of a competition, management can publish in their prize list that jackets will be waived for the duration of the competition. Alternatively, management can announce prior to or during a competition that competitors can show without jackets when extreme heat and/or humidity is forecast. This waiver applies to in all classes including FEI classes at National Competitions. However, competitors must wear **protective headgear** and a shirt with **sleeves** and collar, without neckwear, and without decoration except as described under .14 below. T-shirts are not permitted. Members of the Armed Services or police units may wear summer uniforms.*

**JACKETS WILL BE WAIVED FOR THIS COMPETITION,
DUE TO THE NORMAL TEMPERATURE RANGES.**

USEF MEMBERSHIP STATEMENT

Life, senior active and junior active members shall be eligible to participate in all classes at Regular Competitions, Eventing Competitions at the Preliminary Level or above and Combined Driving Competitions at the Advanced Level, Dressage, Reining and Vaulting Competitions and Endurance Rides. A nonmember may participate as a handler, rider, driver, owner, lessee, agent, coach or trainer at Regular Competitions, Eventing Competitions, Dressage Competitions, Reining Competitions and Combined Driving Competitions upon payment of a \$45 Show Pass fee. Participants in the following classes are exempted from the Requirements of this rule: 1) leadline; 2) exhibitions; 3) games and races; 4) classes for 4-H members; 5) walk trot (exception: Friesian performance FR222) and academy classes (academy classes are classes limited to horses used regularly in a lesson program); 6) USDF introductory level tests, pas de deux and quadrille classes; 7) NRHA Endorsed Reining Competitions. 8) Opportunity classes, 9) citizens of other nations who have proof, in English, of current membership in good standing of their own National Federation, 10) USEA beginner novice division; and 11) assistant handlers in Dressage Sport Horse Breeding classes.

ATTENTION COMPETITORS

Each competitor is responsible for supplying management with correct applicable numbers (USDF, USEF, CDS and, when necessary, FEI) for horse, owner, rider, trainer and coach before the day(s) of the competition. The scores of competitors who fail to supply correct numbers may not be counted toward national awards.

USDF STATEMENT ON ANIMAL WELFARE

The United States Dressage Federation, Inc. (USDF), a federation of over 100 independent organizations throughout the United States with a membership of nearly 30,000 members, supports the concept of ethical treatment of animals.

Dressage is a classical method of training horses, based upon the horse's natural responses, as carried out in a gradual, planned program during which the horse's athletic abilities are improved in a systematic manner. As a result, the horse becomes capable, comfortable, and responsive in partnership with the rider without the use of force. Dressage competition at various levels of achievement is the ultimate test of the training program to determine whether the desired harmony between horse and rider has been achieved.

The rules pertaining to dressage competition prohibit the use of artificial appliances, training aids, and drugs, which would force the horse to submit. Instead, the emphasis is upon training and a cooperative partnership with the rider. Major competitions are carefully monitored to assure that there is no unnecessary force or harshness displayed.

Unlike other horse sports in which horses enter training at a relatively immature state, dressage training is usually not seriously begun until the horse is three or four. The top levels of achievement require five or more years of progressive training and it is not unusual to see horses in international competition in their late teens. This, in itself, places a premium on good care and soundness throughout the horse's life.

While supporting the concept of animal welfare in its broadest form, the United States Dressage Federation, Inc., also recognizes that it is unrealistic to ascribe human emotions and responses to the horse which in its wild state is a creature of flight, living a hard and precarious existence. Under domestication, the horse is assured of ample food, water, and shelter, as well as protection against infectious diseases and damaging parasites, thus leading a longer and healthier life with a high rate of survival.

As an educational organization, USDF has numerous programs, which teach people how to pursue the accepted, humane training methods. A program of certifying instructors also emphasizes protecting the horse's welfare in pursuit of dressage training.

United States Dressage Federation

4051 Iron Works Parkway, Lexington, KY 40511 Phone: 859-971-2277, Fax: 859-971-7722, usdressage@usdf.org, www.usdf.org

CDS ANIMAL WELFARE STATEMENT

The California Dressage Society, an organization of approximately 4,000 individual members, supports the concept of humane and ethical treatment of all animals.

Dressage is a classical method of the training of horses in which the horse's natural responses and athletic abilities become a capable responsive partnership with the rider.

To this end the California Dressage Society is committed to ensuring that owners, trainers, exhibitors and their agents use responsible care in the training, handling, transportation and exhibition of horses.

The California Dressage Society supports scientific research on equine health and stress.

The California Dressage Society is committed to the continuous review, revision and development of competition rules and regulations to protect the welfare of horses.

The California Dressage Society firmly believes that horses are a vital part of its members' life experience and as such deserve our protection and compassion. Humans have an inseparable relationship with the natural world and animals. Furthermore, humanity is accountable to a set of laws and concepts that is uniquely a product of human society. Animals cannot be subject to those laws and concepts and therefore do not have the rights of humans.

Humans are responsible for providing adequate food, water and shelter for horses. CDS supports management and training practices which promote health, prevent disease and protect horses from unnecessary pain and injury.

CDS believes that Dressage Competition is the ultimate test of training to determine the development of harmony between horse and rider. All sanctioned CDS competitions and events will be conducted under the organization's rules regarding the well-being and welfare of horses.

USEF Competition Name: Golden State Dressage Warm-up/Cool-down
Competition Division(s) and Rating(s): Dressage - Level 3

USEF#: 316960



WAYS TO SAVE AS A US EQUESTRIAN MEMBER

DOVER
SADDLERY

Save 10% online and in stores

Protect yourself with discounted
liability and AD&D insurance



Save 15% off your first ride
and 5% off all other rides

Buy 10 bags of feed and get one free!



JOHN DEERE

Save up to 28% on equipment like
GatorsTM and lawnmowers

PLUS *MANY* MORE!



USDF Membership Benefits: USDF is dedicated to education, the recognition of achievement, and promotion of dressage. For details on member benefits, including educational programs, awards, and other opportunities, refer to the *USDF Member Guide* or the USDF website at www.usdf.org.

**This
competition
is recognized
by USDF
for 2018**

Membership Requirements for USEF-licensed/USDF-recognized Competitions: Owners and riders, including foreign riders and owners who are not residents of the US, wishing to participate in a USEF-licensed/USDF-recognized competition as a rider or owner/lessee, must have either a USDF Group Membership (GM), Participating Membership (PM), or have a USDF Non-Member (NM) identification number and pay the USDF Non-Member (NM) fee. (Note: USDF Business Members can own horses but cannot compete as riders with their USDF Business Membership.) Individuals cannot compete at a USEF-licensed/USDF-recognized competition with a USDF Education Membership.

Horses competing at USEF-licensed/USDF-recognized competitions must have either a USDF Horse Identification (HID) number or a USDF Lifetime Horse Registration (LHR). Proper credentials or verification certificates must be presented to the competition secretary.

Riders and owners wishing to participate in a USEF-licensed/USDF-recognized competition, and not able to present the competition secretary with verification of a USDF membership or NM identification, and USDF LHR or USDF HID, must complete a USDF Competition Affidavit Form and pay the \$5 affidavit filing fee. A copy of a completed affidavit form from another competition may also be used for verification purposes for up to 60 days. (Exception: Affidavits cannot be used at Great American Insurance Group/USDF Regional Dressage Championships.)

Exceptions:

- Horses competing only in Individual Breed Classes (IBCs) at DSHB competitions, sires and dams of horses in DSHB group classes, where those sires or dams are not actually competing in the same competition, horses competing only in breed restricted dressage or DSHB classes at Regular Competitions (e.g. all Arabian, all Friesian, or all Morgan classes), or in USDF Introductory Level tests, pas de deux or quadrille, are exempt from this requirement. Also exempt are horses ridden in leadline, exhibitions, games and races, classes for 4-H members, walk-trot, academy, and opportunity classes.
- Riders and owners/lessees competing only in classes which are exempt from the USDF HID requirements are also exempt from the USDF NM identification number and NM fee requirements. Also exempt are handlers of horses competing in DSHB In-Hand or Group classes.

Memberships Defined

Participating Membership (PM): A membership issued to an individual directly by USDF. The membership year is December 1 through November 30. PMs are available for 1-year (\$90), 5-years (\$360), or life (\$1,800). A USDF Youth Participating Membership (YPM) is available for individuals who have not reached their 21st birthday by December 1 of the current membership year (\$72). A PM allows the member to compete at USEF-licensed/USDF-recognized competitions and to participate as a rider and/or owner/lessee for all Adequan®/USDF Year-End Awards, USDF Breeders Championship Series Finals and the Great American Insurance Group/USDF Regional Dressage Championship program.

Group Membership (GM): A membership issued to an individual by USDF when the member name and dues are submitted to USDF through an affiliate Group Member Organization (GMO). The GM year begins December 1 and ends November 30. A GM allows the member to compete at USEF-licensed/USDF-recognized competitions and participate in the USDF Rider Awards program.

Business Membership (BM): A membership that runs December 1 through November 30 and is issued to a business or organization directly by USDF. The USDF BM (\$240) offers a wider variety of advertising benefits. BMs satisfy requirements of horse ownership only.

Education Membership (EM): A membership issued to an individual directly by USDF. This online education only membership expires 12 months after the date joined. This membership type does NOT allow an individual to compete at a USEF-licensed/USDF-recognized competition.

Non-Member (NM) Identification Number: For each USDF NM owner/lessee and USDF NM rider there will be a USDF NM fee of \$35 per competition that must be collected by the show secretary and submitted to USDF, along with the USDF Report of Fees document and the \$5 affidavit fee and Competition Affidavit Form if the person cannot provide a copy of their USDF NM card. Owners/lessees or riders exempt from the NM number requirements are also exempt from paying the USDF NM fee. If there are multiple owners of a horse and all are NMs, only one of the owners must pay the NM fee. If the horse has at least one owner who is a current USDF PM, GM, or BM there is no NM fee assessed. Competition management will be invoiced for all applicable USDF NM fees not received with the USDF post-competition paperwork, along with a report listing all USDF NMs. Competition management is then required to submit the NM fees within 30 days to the USDF. An individual with a USDF NM identification number is not eligible for any USDF membership benefits. Once a USDF NM number has been assigned, a USDF NM card can be obtained from the USDF website.

Horse Identification (HID) Number: A one-time tracking number for horses (\$35). Scores earned by a horse with an HID number will be recorded, but will NOT be counted towards Adequan®/USDF Year-End Awards. A horse with an HID number is not eligible to compete in Great American Insurance Group/USDF Regional qualifying or championship classes or USDF Breeders Championship Series Finals. An HID number can be upgraded to a Lifetime Horse Registration (LHR) for a fee of \$80. If a horse has a USDF LHR it does not need an HID number. An HID number is a one-time fee that does not need to be renewed.

Lifetime Horse Registration (LHR): A horse with an LHR (\$115) is eligible for Adequan®/USDF Year-End Awards, and eligible to compete at USDF Breeders Championship Series Finals and Great American Insurance Group/USDF Regional qualifying and championship classes, assuming requirements for the owner and rider are met. If a horse has an LHR it does not need an HID number. An LHR does not need to be renewed.

How to Join USDF

Applications for USDF Participating Membership (PM), Business Membership (BM), Horse Identification (HID) number, and Lifetime Horse Registration (LHR) may be found in the following locations:

- On the USDF website: www.usdf.org. You can submit the application online or download the form and fax or mail it to the USDF office.
- In the show office at USEF-licensed/USDF-recognized competitions classified by USEF as Dressage Competitions, and Regular Competitions which are open to all breeds.
- By calling or writing the USDF office at (859) 971-2277, 4051 Iron Works Parkway, Lexington, KY 40511

The effective date of membership is the date the form and correct fees are received in the USDF office or, if applying at a competition, the date accepted by the competition secretary, provided the application is signed and dated by the competition secretary, member, and/or horse owner on that same day.



2018 Great American Insurance Group/USDF Regional Dressage Championships

A single Regional Dressage Championship program organized by the United States Dressage Federation (USDF), and recognized by the United States Equestrian Federation, Inc. (USEF), will be held in each of the nine USDF regions. In addition, Alaska and Hawaii may each hold state championships if an official request from a Group Member Organization (GMO) is received by April 1 of the prior year. The Regional Championship Program Rules can be found on the USDF website at www.usdf.org. Please refer to the 2018 USDF Member Guide for the comprehensive list of rules and requirements for this program.

Membership/Registration Requirements for Qualifying and Championships

All memberships and registrations/recordings must be correct and current at the time qualifying scores are earned and at the time of the championships.

Rider:

- Must have a USDF Participating* Membership (PM).
- Must have a USEF membership (Junior Active, Senior Active, or Life).

Horse:

- Must have a USDF Lifetime Horse Registration (LHR).
- Must have a USEF (Annual or Lifetime) Horse recording.
- USDF horse registration and USEF horse recording must be in the name(s) of the current owner(s) or lessee(s) of record. A horse is not required to have breed registry papers.

Owner:

- Must have a USDF Participating or Business Membership and a USEF membership (Junior Active, Senior Active, Life, or Recorded Farm (with Active Farm Owner)). If the horse has more than one owner, at least one owner must have both active USEF membership and active USDF Participating or Business Membership. For a business or farm to be the valid owner under this requirement, it must be listed as an owner of the horse with both USEF and USDF.

* PMs are USDF members who join USDF directly. USDF Group Members (GM) are ineligible.

Minimum Qualifying Scores: One set of nationally-standardized qualifying scores has been established for all USEF/USDF Regional Championships, for Training Level through Grand Prix, in three divisions: open, adult amateur and junior/young rider. FEI Junior and FEI Young Rider classes have only one respective division. Freestyles have only open divisions.

The minimum percentages are as follows:

	OPEN	AA	JR/YR
Training Level (Test 3)	68%	63%	63%
First Level (Test 3)	66%	62%	62%
Second Level (Test 3)	64%	61%	61%
Third Level (Test 3)	62%	60%	60%
Fourth Level (Test 3)	62%	60%	60%
FEI Junior (Team Test)	—	—	60%
FEI Young Rider (Team Test)	—	—	60%
Prix St. Georges	60%	60%	60%
Intermediate I	60%	60%	60%
Intermediate II	60%	60%	60%
Grand Prix	60%	60%	60%
FREESTYLE	OPEN	AA	JR/YR
First Level	63%	—	—
Second Level	63%	—	—
Third Level	63%	—	—
Fourth Level	63%	—	—
Intermediate I	63%	—	—
Grand Prix	63%	—	—



California Dressage Society

2018 Membership Form

Active Membership.....\$70.00
Additional Family Member.....\$60.00
Life Membership\$1,000.00

Name _____

Address _____

City _____

State _____ Zip _____

Phone (____) _____ Cell (____) _____

Email Address _____

Chapter Preference _____

Would you like to use your Visa or MC?

Card # _____

Expiration Date: _____ v-code _____ __ visa __ mastercard

Signature _____

____ Would you like to make an additional donation and be a Patron of Dressage?

CDS Supporter \$25-\$500 ; Silver Supporter \$501-\$2,000 ; Gold Supporter \$2,001 - \$5,000 ; and Patron \$5,000 +

____ Would you like to add \$25 to qualify for the Regional Adult Amateur Competition

There will be a competition offered for Adult Amateurs each year in each CDS Region, check website for qualifying

____ Would you like to add \$25 to be on the Trainers' List in the Roster (not available after Dec 1)

____ Would you like to add \$100 to support Club 100 Junior Programs

Group membership in the United States Dressage Federation (USDF) is included with CDS membership. All CDS memberships go from December to December. Anyone joining after Oct. 1 will be a member for the following year. Please check any of the following that apply:

__ Renewing member __ New member __ Birthdate if under 22 (__ / __ / __)

__ TD __ EMT __ Judge _____

__ Amateur __ Trainer / Instructor __ Qualified Riding Member (QRM)

California Dressage Society
P O Box 417 • Carmel Valley, CA 93924
(831) 659-5696 fax (831) 659-2383
paula@california-dressage.org
www.california-dressage.org

find out more about dressage ... join the california dressage society

What is the California Dressage Society?

It is an organization whose purpose is to foster an interest among horsemen in Dressage. The program of the Society is educational, designed primarily to offer a framework in which individuals can progress with the schooling of themselves and their horses.

CDS is an opportunity - to share, to experience, to learn and to contribute.

What does the Society offer?

Educational activities on a statewide basis includes Riding Seminars, Instructor Seminars, National Symposiums and Judges' Forums. The local chapters sponsor clinics, competitions, films, discussion and informal schooling sessions.

Dressage Letters, the monthly publication, offers educational literature along with a complete calendar of all CDS events.

The CDS Omnibus, yearly e-publication, offers dressage show premiums and entry forms for your convenience in planning and entering shows for the year.

Membership Roster, a yearly printed publication of all the CDS members, including judges and a trainer listing.

What is Dressage?

Dressage (training or schooling) is an equitation term that means the gradual harmonious development of the horse's physical and mental condition with the aim to achieve the improvement of his natural gaits and perfect understanding with his rider.



RAAC. Regional Adult Amateur Competitions for Amateurs to compete in Novice or Elite Divisions within their Region, North, Central and South.



SHERI SCOTT PHOTO

Junior Championships. Juniors & Young Riders can qualify. One show held in the north and one in the south.

CDS Horse of the Year Competition. A horse /rider combination can qualify for the year end CDS Annual Show.



Membership types

Active membership provides all of the above privileges, as well as voting rights, and eligibility to hold office and to apply for a Qualified Riding Membership.

Family membership is an Active Membership for more than one member in an immediate family, living at the same address.

Life membership is an Active Membership for the life of the member.

A membership card is issued with each membership.



www.california-dressage.org
P O BOX 417 CARMEL VALLEY, CA 93924 831-659-5696



POSTER MUST BE PROMINENTLY DISPLAYED AT THE SHOW OFFICE



2018 USDF Breeders Championship Series

The USDF Breeders Championship Series (USDFBCS) is a program intent on recognizing quality bloodlines and dressage prospects across the nation. Through a combination of in-hand and materiale classes, the USDFBCS program strives to provide top-notch competition opportunities for prospect and breeding stock horses. The USDFBCS is scheduled on a calendar year basis, which means that the USDFBCS competition year runs from January 1-December 31. A series must have a minimum of three qualifying events in order to

host a series final competition, with series boundaries being determined by USDF. Please be advised that the boundaries of any given series may cross the regional boundaries established for dressage competitions. All Dressage Sport Horse Breeding (DSHB) and USDFBCS exhibitors and management staff are responsible for knowing the rules pertaining to USEF-licensed/USDF-recognized dressage competitions holding DSHB classes, as well as USEF-licensed/USDF-recognized competitions in general. The USEF Rule Book Chapter Dressage, Subchapter DR-2, contains the DSHB class rules, and can found online at www.usef.org. All recent rule changes in the online USEF Rule Book will be noted in color.

IN-HAND CHAMPIONSHIP DIVISION

A. Horse Registration and Membership Requirements FOR Eligibility (In-Hand Classes)

1. All horses entered in any USDFBCS qualifying class must have either a USDF Lifetime Horse Registration (LHR) or USDF Horse Identification Number (HID), and submit identification information. Horses registered with a breed organization must have a copy of their registration papers submitted directly to USDF. Any horse participating in the series final classes must have a LHR with USDF. The HID fee will apply toward the LHR fee.
2. Owner is not required to be a USDF member for qualifying events. If the owner does not have a current USDF Group, Participating, or Business Membership, non-member fees will apply. However, owner must have a current USDF Participating Membership (PM) or Business Membership (BM) for their horse to compete in the series final class.
3. Neither USDF membership nor a USDF non-member fee is required for the handler.
4. Horses participating in USDFBCS qualifying or final events are not required to be registered with any studbook, but "if a horse is registered with any breed organization, the name of the breed, sire, dam, damsire, and breeder must be given on the entry blank. For unregistered horses competing in DSHB classes, the information is strongly recommended, if available." (GR907).
5. It is strongly recommended that horses not registered with a breed registry be listed as "unregistered".
6. It is the responsibility of the horse owner to ensure that their USDF membership and USDF horse registration are correct and current prior to the start of the series final class.

B. REQUIREMENTS FOR USDFBCS QUALIFYING EVENTS (IN-HAND CLASSES)

1. Classes must be offered and judged according to DR209.
2. All divisions must offer Sport Horse Prospect In-Hand and Breeding Stock In-Hand classes.
3. Only a single set of Sport Horse Prospect In-Hand and Breeding Stock In-Hand Dressage Sport Horse Breeding classes may be offered to serve as qualifying classes for the USDFBCS per competition. These classes must be open to all horses and ponies of the appropriate age and sex, and not subject to any entry restriction.
4. A separate championship class must be held for all divisions, even those that have only one class or one horse in the division. For example, if there is only one class of mares, the top two mares from that class would then be shown in the championship class. If there is only one stallion in the one stallion class, that stallion would then show again in the championship class. All horses must be reevaluated by the judge(s) at both the walk and the trot in the championship class. If any one of the judges adjudicating this class has not previously judged all of the horses in this class, conformation must also be reevaluated on every horse.
5. Each qualifier event must offer a current year filly class, a separate current year colt/gelding class and a current year foal championship class. This current year foal championship class is a series final qualifying class. This class must be held and judged (i.e. re-evaluated at the walk and the trot, and conformation if required) in accordance with DR210.

The current year foal championship class, at qualifier events, must be open to first and second place winners of Sport Horse Prospect In-Hand classes for all foals of current calendar year, as listed below. First and second place (and third if desired) fillies and colts/geldings of current year will compete against each other in the same class. (Organizers have the option of including third placed horses in qualifier championship classes.) No scores are given. Ties are not allowed.

Current Year Foal Championship:

Fillies of current calendar year

Colts/Geldings of current calendar year

The champion and reserve champion current year foals at each qualifier event are eligible to compete in their respective USDFBCS series final class. A third place foal in the championship class must be named as well.

6. Each qualifier event must offer a Filly Championship class and a Colt/Gelding Championship class. These classes are USDFBCS qualifying classes. These classes must be held and judged (i.e. re-evaluated at the walk and the trot, and possibly the conformation) in accordance with DR210. The filly and colt/gelding championship classes must be open to first and second placed winners of Sport Horse Prospect In-Hand classes for all horses, as listed below. (Organizers have the option of including third placed horses in qualifier championship classes). No scores are given. Ties are not allowed.

Filly Championship:

Yearling Fillies

Two-year-old Fillies

Three-year-old Fillies

Colt/Gelding Championship:

Yearling Colts/Geldings

Two-year-old Colts/Geldings

Three-year-old Colts/Geldings

The champion and reserve champion filly and the champion and reserve champion colt/gelding at each qualifier event are eligible to compete in their respective USDFBCS series final class. A third place horse in each championship class must be named as well.

Current Year Foals ARE NOT ALLOWED in Filly Championship and Colt/Gelding Championship classes.

7. Each qualifier event must offer a Mare Championship class and a Stallion Championship class. These championship classes are USDFBCS qualifying classes. These classes must be held and judged (i.e. re-evaluated at the walk and the trot, and possibly the conformation) in accordance with DR210. Mare and Stallion Championship classes must be open to first and second placed winners of Breeding Stock In-Hand classes for horses age four years old and over, as listed below. (Organizers have the option of including third placed horses in qualifier championship classes). No scores are given. Ties are not allowed.

Mare Championship:

Mare classes may be divided by age, competition and/or breeding status (as of January 1st of the current competition year), as in the following example:

- Four-year-old and older maiden mares – never bred
- Four-year-old and older yield mares – previously bred but not currently bred or nursing
- Four-year-old and older broodmares – in foal or currently nursing (mare only to be judged).

For details on determining breeding status for competition purposes, please refer to DR203.

Stallion Championship:

Stallion classes may be divided by age or competition status, as in the following example:

- Four-year-old and older stallions showing only in-hand
- Four-year-old and older stallions showing also under saddle

The champion and reserve champion mare and the champion and reserve champion stallion at each qualifier event are eligible to compete in their respective USDFBCS series final class. A third place horse in each championship class must be named as well.

8. Age/sex eligibility is determined as follows:

- a. Fillies, colts, and geldings three years of age or under may show ONLY as sport horse prospects, not in breeding stock classes/categories.
- b. Mares and stallions age four and over, may show ONLY in breeding stock classes/categories. Note: Two and three-year-olds are ONLY eligible to compete in the filly or colt/gelding championships. They are NOT eligible for the mare or stallion championships.
- c. Geldings of any age may NOT show in breeding stock classes/categories. Geldings age three and under may show ONLY in sport horse prospect classes.

9. Scoresheets: Age group classes must be judged using the appropriate scoring categories and percentages. Sport horses three years old and under MUST be evaluated on the current USDF Dressage Sport Horse Prospect In-Hand scoresheets and breeding stock MUST be evaluated on the current USDF Dressage Sport Horse Breeding Stock scoresheets.
10. Horses in all USDFBCS qualifying classes must be evaluated for movement according to DR210. Each horse competing at a USDFBCS qualifying show will

have only ONE opportunity to qualify for the championship class appropriate to their age/sex category.

11. During the same or separate awards ceremonies, the current year foal champion and reserve, the filly champion and reserve, the colt/gelding champion and reserve, the mare champion and reserve, and the stallion champion and reserve, must be named USDFBCS qualifying champions and reserve champions for the show. A third place horse in each championship class must be named as well. Ties are not allowed. Announcements must identify sponsors and horses' breeding information.
12. Each qualified champion and reserve champion (up to ten), must be presented with a qualifier ribbon. These ribbons will be supplied to the show by USDF. Only the champion and reserve champion will receive the qualifier ribbons, even if they have previously qualified. The third place horse in the qualifier championship class will not receive a qualifier ribbon. The qualifier ribbons for champion and reserve champion are identical.
13. All champions and reserve champions will be eligible to compete in the USDFBCS series finals. In the event that a champion and/or reserve has already qualified for the final, the third-placed horse from the pertinent qualifying championship class will be eligible to compete in the final. Competition management is required to have judges place qualifying championship classes to three places, with no ties. In addition, any other horse receiving a 77.00 percent or better in its age/sex class will be qualified and eligible to compete in the USDFBCS series finals.
14. A list of qualified horses is maintained, by series, on the USDF website.
15. Horses must qualify in the same series in which they enter the final. Exception: Horses that have qualified for a series final which is either not scheduled or is cancelled may participate in the final of any other USDFBCS series in the same calendar year, without having to re-qualify for that series final. Owners of horses that have qualified for a final that is not held must indicate which series their horse qualified in on their entry form for the alternative final.
16. Horses may compete in qualifying events in any series, but if qualified for more than one series final, they may participate in ONLY one final class at one series final.
17. If there is a change of ownership of the horse, the new owner(s) may choose to participate in the series final where they reside, regardless of where the horse qualified, provided that the new owner contacts the USDF office and initiates the transfer of ownership at least 30 days prior to the new series final date.

C. CONDUCT OF IN-HAND FINALS CLASSES AT SERIES FINAL COMPETITIONS

1. At least two USEF DSHB judges (DR202) must officiate in each series final class; one of the two required judges must be a USEF 'R' DSHB judge. Each judge will evaluate each entry independently, and scribes must be provided for each judge. Winners will be determined by the average of all judges' scores. The highest scoring horses will be declared champions and the second highest will be declared reserve champions of the series final.
2. Ties in series final classes must remain unbroken.
3. There are five in-hand championship classes in USDFBCS series final competitions. Current year foal champions and reserves from each qualifying event will compete together in the USDFBCS current year foal series final class. Filly champions and reserves from each qualifying event will compete together in the USDFBCS filly series final class. Colt/gelding champions and reserves from each qualifying event will compete together in the USDFBCS colt/gelding series final class. Mare champions and reserves from each qualifying event will compete together in the USDFBCS mare series final class. Stallion champions and reserves from each qualifying event will compete together in the USDFBCS stallion series final class.
4. A grand champion and reserve grand champion current year foal, a grand champion and reserve grand champion filly, a grand champion and reserve grand champion colt/gelding, a grand champion and reserve grand champion mare, and a grand champion and reserve grand champion stallion will be named at each USDFBCS series final event. Grand and reserve champions will receive awards and prizes provided by USDF. Third through sixth placed horses in series final classes will receive ribbons provided by USDF. After the last series final competition in a competition year, special certificates will be available from USDF via the website to owners of all horses that competed in USDFBCS series final classes.

5. USDF reserves the right to change, alter, or retract any placings and/or prizes for up to 60 days after the last day of the championship if an error or violation is discovered.
6. Horses must be shown individually on the triangle at the walk and trot, and standing for conformation. Each horse must be evaluated in the same manner. Callbacks are permitted. If horses may be recalled, the prize list or program must state that this procedure will be used (DR209).
7. Owner must enter the qualified horse in the USDFBCS series final championship class. The horse is NOT automatically entered in the series final championship class because it qualified earlier in the day or at another show.
8. Horses in the current year foal final class, filly final class and the colt/gelding final class MUST be evaluated using the USDF Dressage Sport Horse Prospect In-Hand scoresheets. Horses in the mare final class and the stallion final class MUST be evaluated using the USDF Dressage Sport Horse Breeding Stock scoresheets.
9. Management must collect USDF Lifetime Horse Registration and/or Participating or Business Memberships applications and fees prior to commencement of the series final classes for eligible entries that wish to participate in the series final classes. These applications and fees must be submitted to the USDF office within 24 hours of the series final classes.
10. Series final events must agree to allow late entries in series final classes for horses that qualified for the series final event after the official closing date.

MATERIALE CHAMPIONSHIPS

Materiale Championships will be held at each USDFBCS series final competition. Each USDFBCS series final will hold a Three-Year-Old Materiale Championship class and a Four/Five-Year-Old Materiale Championship class. Fillies, colts, mares, stallions, and/or geldings, will compete in the same championship classes of their respective age groups. A Grand Champion and Reserve Grand Champion will be named for both the three-year-old championship class and the four/five-year-old championship class at each series final event. These specific age categories of three-year-olds and four/five year-olds are the only eligible categories to be offered as USDFBCS Materiale Championship classes.

A. HORSE REGISTRATION AND MEMBERSHIP REQUIREMENTS FOR ELIGIBILITY (FOR MATERIALE CLASSES)

1. All horses entered in any materiale class held at a USEF/USDF recognized Dressage Sport Horse Breeding (DSHB) or dressage competition must have either a USDF Lifetime Horse Registration (LHR) or USDF Horse Identification Number (HID), and submit identification information. Horses registered with a breed organization must have a copy of their registration papers submitted directly to USDF. Any horse participating in a USDFBCS Materiale Championship classes must have a LHR with USDF. The HID fee will apply toward the LHR fee.
2. Owner is not required to be a USDF member for a horse to compete in materiale classes or earn USDFBCS materiale championship qualification scores at USEF/USDF recognized DSHB or dressage competitions. If the owner does not have a current USDF Group, Participating or Business membership, non-member fees will apply. However, the owner **must** have a current USDF Participating Membership (PM), or Business Membership (BM), for the owner's horse to compete in a USDFBCS Materiale Championship class.
3. **Rider is required to have a current USDF PM at the time a horse's qualifying score is earned and at the time of the USDFBCS Materiale Championship class.**
4. Horses participating in USDFBCS qualifying or final events are not required to be registered with any studbook, but, "if a horse is registered with any breed organization, the name of the breed, sire, dam, dam sire and breeder must be given on the entry blank" (GR907).
5. It is strongly recommended that horses not registered with a breed registry be listed as "unregistered".
6. It is the responsibility of the horse owner to ensure that the owner's and rider's USDF membership and USDF horse registration are correct and current.

B. REQUIREMENTS FOR MATERIALE CHAMPIONSHIP QUALIFICATION

1. A horse may qualify for competition in a USDFBCS Materiale Championship class by receiving one score of 72.0% or higher in a materiale class held at any USEF-licensed/USDF-recognized DSHB or Dressage competition during the relative competition year.
2. Scores must be earned at competitions licensed by USEF as dressage competitions. Scores earned at competitions licensed by USEF as Regular or Local competitions

are not eligible to be used as qualifying scores for the USDFBCS Materiale Championships.

3. The USDFBCS Materiale Championships will run on the same calendar year as the USDFBCS (January 1-December 31). **Qualifications to compete in a USDFBCS Materiale Championship class must be earned in the calendar year that the championship will occur.** Any qualifications earned in other calendar years will not apply.
4. Qualifying scores must be earned in materiale classes run under DR134 and DR204. Fillies and/or mares may not be combined in classes with colts, geldings and/or stallions (exception: championship materiale classes – see DR204).
5. At each USDFBCS series final competition, two age group materiale championship classes will be held. All qualified horses regardless of sex will compete against one another in their respective age groups. This means that all qualified three-year-olds will compete in one class to determine the USDFBCS Materiale Champion Three-Year-Old, and all four-and-five-year-olds will compete in a separate class to determine the USDFBCS Materiale Champion Four/Five-Year-Old.
6. Horses will be evaluated according to the criteria listed on the current “USDF Materiale Class” scoresheet, and classes must be conducted according to the current USDF “Procedures to Host USDF Materiale Classes”.
7. Qualifying scores to compete in a class may be earned up until the championship class occurs.
8. Once a horse has qualified to compete in a USDFBCS Materiale Championship class, the horse is eligible to compete at the USDFBCS series final of the owner’s choice. This means that the horse does **not** have to attend the series final being held within the same geographical area or series that the qualifying score was earned in. However, a horse may only compete in one USDFBCS Materiale Championship class in a given calendar year.
9. A list of qualified horses is maintained on the USDF website.
10. A horse may qualify with a different rider than the rider who competes the horse in the championship class.
11. Dressage competitions with materiale classes scheduled after the USDFBCS series finals are held, are not eligible to participate in the USDFBCS program, and will not be qualifying events for the next year’s series final.

C. CONDUCT OF MATERIALE CHAMPIONSHIP CLASSES AT THE SERIES FINAL

1. At least two USEF DSHB judges must officiate in each USDFBCS Materiale Championship class. One of the two required judges must be a USEF ‘R’ DSHB judge. The other judge may be a USEF ‘r’ DSHB judge. Guest Cards to judge DSHB classes are not allowed, per USEF GR1011. Each judge will evaluate each entry independently, and scribes must be provided for each judge. Winners will be determined by the average of all judges’ scores. The highest scoring horse will be declared grand champion, and the second highest will be declared reserve grand champion for their respective age-group classes. Scores must be awarded to all competitors competing in materiale classes, as well as USDFBCS Materiale Championship classes.
 - a. Ties in USDFBCS Materiale Championship classes must remain unbroken.
 - b. A Grand Champion and Reserve Grand Champion will be named for both the three-year-old and four/five-year-old USDFBCS Materiale Championship classes at each series final competition. Grand Champion and Reserve Grand Champions will receive awards and prizes provided by USDF. Third through sixth placed horses in these materiale championship classes will receive ribbons provided by USDF.
 - c. After the conclusion of the last scheduled series final competition, special certificates will be available from USDF via the website to owners of all horses that competed in USDFBCS Materiale Championship classes.
 - d. USDF reserves the right to change, alter, or retract any placings and/or prizes for up to 60 days after the last day of the championship if an error or violation is discovered.
 - e. Owner must enter the qualified horse in the horse’s appropriate USDFBCS Materiale Championship class prior to commencement of the class. The horse is NOT automatically entered in the class because the horse qualified earlier in the day or at another show. All appropriate memberships and horse recordings must also be correct prior to commencement of the class.
 - f. Management must collect all USDF Lifetime Horse Registration and/or Participating or Business Membership applications and fees for eligible entries that wish to participate in a USDFBCS Materiale Championship class prior to commencement of the class. The applications and fees then must be submitted to the USDF office within 24 hours of the USDFBCS Materiale Championship classes.
 - g. USDFBCS series final events must agree to allow late entries in the USDFBCS Materiale Championship classes for horses that qualified for the championship after the official closing date.
 - h. Series final events must hold materiale classes allowing for qualification opportunities prior to holding the USDFBCS Materiale Championship classes.

THREE-YEAR-OLD PROSPECT AWARD

The Three-Year-Old Prospect Award will be awarded to the three-year-old horse earning the highest combined in-hand series final championship class and series final materiale championship class scores at each USDFBCS Series Final annually. USDF will provide each USDFBCS Series Final competition with the prize for the Three-Year-Old Prospect Award. This award must be presented to the award winner at the competition, and a photo taken of the award winner.

AWARD CEREMONIES

A. REQUIREMENTS

1. For all finals, a USDF sponsor banner must be prominently displayed. If the banner is misplaced or damaged, the event will be responsible for the cost of repair or replacement. Banners must be returned to USDF within 30 days of the competition.
2. In addition to the general requirements above, the awards presentation ceremonies and award presenters at each series final event must be arranged in cooperation with USDF. USDF will contact sponsors to determine if they or a representative plan to attend the award ceremonies. USDF will forward this information to the appropriate management team.
3. All USDFBCS sponsors (or their representatives) should be invited to participate in the final event award ceremonies. Award ceremony announcements must identify the sponsoring organizations. Any sponsors in attendance at these events should be provided with a complimentary copy of the competition program and be given free admission to the event.
4. Management must send two champion photos of in-hand competitors, two champion photos of materiale championship competitors, and two champion photos of the Three-Year-Old Prospect award winner, electronically to USDF for publication with the final results. Persons and horses in the photos must be identified. A photographer’s release must also be submitted.
5. Public announcements must be made, which credit the title sponsor and promote the program to the public. These announcements **are required** to be made throughout the event, in particular, during the awarding of Current Year Foal, Filly, Colt/Gelding, Mare and Stallion Championships and Three-Year-Old Materiale and Four/Five-Year-Old Materiale Championships. The name of the breeder(s) must be announced during award ceremonies. It is also strongly recommended that breeder(s) and owners of placing horses be invited to participate in award ceremonies.
6. All unused ribbons and prizes must be returned to USDF within 30 days of the competition. If awards are misplaced or damaged, the event will be responsible for the cost of replacement. For series qualifiers, USDF will provide ten qualifier ribbons (two per division). For series finals, USDF will provide neck sashes and prizes for Grand Champion and Reserve Grand Champion and ribbons for third through sixth place. Ribbons and prizes will be sent directly to the designated competition contact about two weeks prior to the event.
7. Show management is responsible to have a professional photographer for USDFBCS series final competitions.

COMPETITION MANAGEMENT

A. APPLYING FOR AND SCHEDULING QUALIFIER AND FINAL EVENTS

1. The USDFBCS is scheduled on a calendar year basis (January 1-December 31).
2. A series must have a minimum of three qualifying events in order to hold a series final. All shows in the series, including qualifier classes held in conjunction with the series final, are qualifying events.
3. Competitions intending to host USDFBCS qualifying classes must submit their USDFBCS qualifier application to USDF no less than sixty days prior to the start of the competition. Any competitions submitting USDFBCS qualifier applications less than sixty days prior to the start of the competition will be considered on a case-by-case basis and subject to a \$50 late application fee.
4. Competitions may not advertise themselves as being qualifying opportunities for the USDFBCS prior to submitting a qualifier application and related \$75 fee to USDF.
5. The official USDFBCS host site application form for qualifiers and series finals will be available from the USDF office during the summer, prior to the start of the next competition year. USEF-licensed/USDF-recognized dressage competitions interested in hosting a final for a series must submit a completed USDFBCS event application form and contract to the USDF office by October 1 of the year prior to the series final to request consideration for hosting the series final.
6. The final event of each series is often the last USEF-licensed/USDF-recognized dressage competition holding DSHB classes scheduled in a particular geographical area of the United States. However, a series final must also be held in conjunction with a USDFBCS qualifying event. Host sites of series finals will be designated on or about November 1 of the year prior to the series

final year. Competitions which submit a host site application past November 1 of the year prior to the series final year will be subject to a \$50 late application fee and reviewed on a case-by-case basis.

7. The series final must meet the minimum requirements for a series final: 1) minimum USEF Level 2 competition 2) Show manager and secretary must both be members of USEF and USDF (USDF Participating or Group Membership is required) at the time of championships. 3) all other requirements as stated in the USDFBCS Series Final Host Site Application.
8. It is recommended that a series final be held in conjunction with a USEF-licensed/USDF-recognized competition unless it has a proven stand-alone history.
9. All applications for a series final will be considered on a case-by-case basis.
10. A series final will be considered “definite” when at least three qualifying events have registered with USDF to participate in the series for the year. If it meets the minimum requirements, a series final will be considered “tentative” until at least three events have registered for the series.
11. If two or more qualified events in the same series wish to host the series final, a working group appointed by the Sport Horse Committee, will select the host site of the series final, after consultation with the chair of the Sport Horse Committee, the regional director(s) of the region(s) with qualifying events in the series and the Sport Horse Committee liaison. Priority for the final will be given to 1) the date of event, which must be after all qualifying events are normally scheduled, and ideally, between August 1 and October 1 of the series final year, 2) the most prestigious DSHB show, or USDF Regional Dressage Championship in the geographical area, 3) location and accessibility to competitors, 4) experience of the competition management with DSHB competitions and 5) history of rule compliance with USEF and USDF.
12. All USEF-licensed/USDF-recognized dressage competitions with DSHB classes scheduled prior to the series final in the same calendar year and geographical area are eligible to participate in the USDFBCS program. Dressage competitions with DSHB classes scheduled after the series final in their area are not eligible to participate in the USDFBCS program, and will not be qualifying events for the next year’s series final.
13. Only one USDFBCS series, or part of a series, may be held in any particular geographical area in the same calendar year. The boundaries of a series will be determined by USDF in consultation with regional directors and the chair of the Sport Horse Committee. Series will include clusters of DSHB shows, and may cross the regional boundaries established for dressage competitions.
14. If a USDFBCS series does not have at least three qualifying events recognized by USDF by June 1 of the series final year, the final will not be held.

B. ADVERTISING AND PROMOTION

1. In order to receive full promotional benefits from USDF, qualifying and final events must be approved at least six months prior to the competition.
2. Qualifiers and final events must be approved by USDF in writing each year before they advertise that they are participating as qualifying or final events in the USDFBCS program.
3. “USDFBCS” or “USDF Breeders Championship Series” must be used in its entirety if included as the title of an event, or if referred to anywhere within the prize list or program. (In other words, you cannot title a competition the “XYZ Breeders Competition”).
4. The title “USDF Breeders Championship _____ Series Final” must be prominently listed in the final event official prize list, show program, promotional materials, and advertisements once the competition has received written approval of its status as a designated USDFBCS series Final competition.
5. Unless a competition has received written confirmation from USDF of the Federation’s approval to host a USDFBCS series final competition, the competition cannot utilize any competition name or title that would include a USDFBCS series final designation. Any failure on the part of the competition management to follow this protocol will result in a \$100 fine.

C. PRIZES

1. Prizes will be awarded during the finals competition award ceremonies.
2. Prizes and/or other awards may be withheld by USDF to series winners if the following information is not provided to USDF or show management by

required deadlines: name of owner; name, age and sex of horse; and if known, the breed of horse, sire, dam, damsire, and breeder.

3. Prizes and/or other awards may be withheld by USDF if it is found that a series award winner or owner was not in compliance with USDF series final membership and horse registration requirements.

D. RULES REGARDING CONTRACTS AND RECOGNITION

1. Qualifying and final events must be USEF-licensed/USDF-recognized dressage competitions and all classes must be conducted under USEF rules.
2. USDFBCS event application, contract and rules for the upcoming competition year will be available to show managers during the summer of the year prior to each USDFBCS competition year.
3. Rule changes and requirements will be fully approved and publicized by July 1 of the year prior to each USDFBCS competition year.
4. Changes of rules, requirements, or contract obligations for competition management (and/or competitors, if applicable) are not permitted after August 1 of the year prior to the start of the USDFBCS competition year, except when changed by the USEF and/or USDF Executive Board.
5. USDFBCS rules and procedures must be listed in the official prize list for the event, and must be available sufficiently in advance to all potential competitors, or the event may be in violation of USEF rules.
6. For qualifying events whose dates fall after the closing date for their series final event, the results must be emailed to USDF at results@usdf.org within 24 hours of completion of the qualifying event. USDF will verify those horses who have qualified with the series final event secretary.

E. CONDUCT AND COMPETITION STANDARDS FOR USDFBCS QUALIFYING AND FINAL EVENTS

Series Final events must meet the minimum requirements for a series final:

1. A minimum Level 2 competition.
2. Show manager and secretary must both be members of USEF and USDF (USDF Participating or Group Membership is required) at the time of championships. All other requirements are as stated in the USDFBCS Finals Host Site Application.
3. DSHB competitions are not permitted to exclude horses from competing in an event that have previously qualified for a USDFBCS series final. Such exclusion is not permitted by USEF rules, and penalties could result.
4. Neither foals nor horses of any other age may be shown loose.
5. Note the following clarification on “stallion”: No geldings may compete in the USDFBCS classes for stallions even if they are gelded after qualifying for the finals and are breeding via frozen semen.

LICENSED OFFICIALS

A. REQUIREMENTS

1. According to DR202 a competition with a USEF- licensed Dressage Sport Horse Breeding (DSHB) division must have a USEF- licensed DSHB judge and a USEF- licensed dressage technical delegate (TD) . Guest Cards to judge DSHB classes are not allowed, per USEFGR1011.
2. Apprentice judging is NOT permitted during USDFBCS series final classes.
3. Hunter Breeding judges or USEF judges with other licenses or in other disciplines are NOT permitted to judge DSHB classes.
4. It is recommended that the USEF (TD) officiating at a USDFBCS series final have significant experience officiating as a TD at DSHB shows.

UNITED STATES EQUESTRIAN FEDERATION RULES

Please note that competition management, licensed officials and competitors must be aware of all USEF DSHB and applicable USEF general rules. Be sure to check the online version of the rules for any clarifications or changes that may have occurred for the current competition year.

USEF Rule Book Subchapter DR-2 Dressage Sport Horse Breeding

Recognizing quality bloodlines and dressage prospects across the nation.



USDF Breeders Championship Series

2018 Series Finals Dates and Locations*

Northwest Series

August 26, 2018 • Donida Farm Equestrian Center, Auburn, WA

West Coast Series

September 16, 2018 • Pacific Equestrian Center, Wilton, CA

Rocky Mountain Series

September 20, 2018 • Colorado Horse Park, Parker, CO

Midstates Series

September 22, 2018 • Missouri State Fair Coliseum, Sedalia, MO

Southern Series

September 15, 2018 • Haras Hacienda, Magnolia, TX

North Central Series

July 8, 2018 • Kentucky Horse Park, Lexington, KY

East Coast Series

September 25-30, 2018 • Devon Horse Show & Country Fairgrounds, Devon, PA

New England Series

September 20-23, 2018 • HITS on the Hudson, Saugerties, NY

**This information may be subject to change*

**Visit the USDF website for more information
and to find a qualifying competition near you.**

www.usdf.org



THE COMPLETE SPORHORSE CENTER

CLASS LIST

Add AA (USEF Amateur Card mandatory), JR/YR, Open as appropriate

FRI	SAT	SUN	TEST		\$
201	301	401	Training Level, Test 1		\$60
202	302	402	Training Level, Test 2		\$60
203	303	403	Training Level, Test 3	Q	\$60
204	304	404	Rider Test of Choice		\$60
205	305	405	Introductory, Test A		\$60
206	306	406	Introductory, Test B		\$60
207	307	407	Introductory, Test C		\$60
210	310	410	Q Test of Choice (Tr-IV - Tests 3 only)	Q	\$60
280	380	480	Q Test of Choice (First-IV - Freestyles)	Q	\$60
270	370	470	Freestyle - Training Level		\$70
211	311	411	First Level, Test 1		\$60
212	312	412	First Level, Test 2		\$60
213	313	413	First Level, Test 3	Q	\$60
271	371	471	Freestyle - First Level	Q	\$70
221	321	421	Second Level, Test 1		\$60
222	322	422	Second Level, Test 2		\$60
223	323	423	Second Level, Test 3	Q	\$60
272	372	472	Freestyle - Second Level	Q	\$70
231	331	431	Third Level, Test 1		\$60
232	332	432	Third Level, Test 2		\$60
233	333	433	Third Level, Test 3	Q	\$60
273	373	473	Freestyle - Third Level	Q	\$70
241	341	441	Fourth Level, Test 1		\$60
242	342	442	Fourth Level, Test 2		\$60
243	343	443	Fourth Level, Test 3	Q	\$60
274	374	474	Freestyle - Fourth Level	Q	\$70
250	350	450	FEI - Test of Choice		\$70
251	351	451	Prix St. Georges	Q	\$70
252			USEF Developing Horse PSG		\$70
253	353	453	Intermediaire I	Q	\$70
254	354	454	Intermediate A or B Test of Choice		\$70
255	355	455	Intermediaire II	Q	\$70
256			Young Rider Grand Prix (16-25)		\$70
257	357	457	Grand Prix	Q	\$70
258	358	458	Grand Prix Special		\$70
259			USEF Developing Horse Grand Prix		\$70

Q = Great American Insurance/USDF Qualifying.

Add \$15 to class fee and review membership and horse registration requirements prior to entering.

Horse may enter two consecutive levels only – even if more than one rider.

Horse limited to three tests per day (Intro-IV) & two per day (FEI).

FRI	SAT	SUN	TEST		\$
275	375	475	Freestyle - Intermediaire I	Q	\$70
276	376	476	Freestyle - Grand Prix	Q	\$70
260			FEI Junior Team	Q	\$70
261			FEI Junior Individual		\$70
262			FEI Junior Freestyle		\$70
263			FEI Young Rider Team	Q	\$70
264			FEI Young Rider Individual		\$70
265			FEI Young Rider Freestyle		\$70
266	366	466	FEI Children Team		\$70
267	267	467	FEI Children Individual		\$70
268	368	468	FEI Q TOC (Q listed tests only)	Q	\$70
269	369	469	FEI Q FS TOC (Q listed tests only)	Q	\$70
902	903	904	ParaEquestrian Team Test of Choice		\$70
906	907	908	ParaEquestrian Individual Test of Choice		\$70
910	911	912	ParaEquestrian Freestyle Test of Choice		\$70
81	82	83	Materiale - 3 YO Fillies		\$45
84	85	86	Materiale - 3 YO Colts/Geldings		\$45
87	88	89	Materiale - 4 YO Mares		\$45
90	91	92	Materiale - 4 YO Stallions/Geldings		\$45
93	94	95	Materiale - 5 YO Mares		\$45
96	97	98	Materiale - 5 YO Stallions/Geldings		\$45
51		53	Dressage Seat Equitation - 13 & under		\$40
54		56	Dressage Seat Equitation - 14-18		\$40
57	58	59	Dressage Seat Equitation - Adult Amateur		\$40
294	394		USEF and FEI Young Horse TOC		\$70
200	300	400	Exhibition Class		\$60
			Lead-line, Pas de deux, Quadrille		
208	308	408	OPPORTUNITY: Training, Test 1		\$50
209	309	409	OPPORTUNITY: Training, Test 2		\$50
600	700	799	Eventing TOC – will be divided into separate classes if entries warrant – may enter maximum 3 tests per day		\$60

Q = Great American Insurance/USDF Qualifying.

Add \$15 to class fee and review membership and horse registration requirements prior to entering.

Horse may enter two consecutive levels only – even if more than one rider.

Horse limited to three tests per day (Intro-IV) & two per day (FEI).

National Dressage Pony Cup Classes on separate page.
USEF Qualifying Classes on separate page.
Sport Horse Breed Classes on separate page.
CDS Northern Junior Championships in a separate section.



GSD Warm-up/Cool-down & CDS No. JR Championships: July 27-29, 2018

One Horse/Rider per form
Horse may enter no more than two consecutive levels,
even with multiple riders.

Sign Both Releases!

COMPLETE THIS SIDE AND BOTH RELEASE FORMS
CHECKS PAYABLE TO: Golden State Dressage, Inc.
MAIL TO: 17704 Alexandra Way, Grass Valley, CA 95949

HORSE INFORMATION

NAME OF HORSE: _____

USEF HID, ANNUAL OR LIFE NUMBER: _____

USEF numbers not required to participate.

USDF HID OR LIFE NUMBER: _____

HID MANDATORY TO PARTICIPATE - include \$35 on entry and Complete form at show if HID cannot be obtained prior. HID not required if horse is USDF LIFE Registered.

MICROCHIP NUMBER (IF AVAILABLE): _____

Breed/Breed Registry Initials: _____

Breed Registry Numbers (if available) _____

Sex: _____ Height: _____ Color: _____

Sire: _____

Dam: _____

Damsire: _____

Country of Birth: _____ Year Born: _____

Breeder: _____

RIDER INFORMATION (ALL INFORMATION REQUIRED)

Name: _____

Address: _____

City: _____ **State:** _____ **Zip:** _____

Phone: _____

Cell: _____

Citizenship: _____

EMAIL: _____

Rider Status (circle one): OPEN ADULT AMATEUR JR/YR

USEF Amateur Card is MANDATORY - Must also indicate AA next to class numbers

JR/YR Date of Birth: _____

***USEF MEMBERSHIP NUMBER:** _____

SHOW PASS REQUIRED IF NOT A MEMBER - pay \$45 on entry.

Membership can be obtained at show.

*****USDF GROUP, or PARTICIPATING NUMBER:** _____

NON-MEMBER FEE REQUIRED IF NOT A MEMBER - pay \$35 on entry.

CDS MEMBERSHIP NUMBER: _____

Proof needed to report number

OWNER (SAME O.K. IF NO CHANGE FROM RIDER)

Name: _____

Address: _____

City: _____ **State:** _____ **Zip:** _____

Phone: _____

Cell: _____

Citizenship: _____

EMAIL: _____

***USEF MEMBERSHIP NUMBER:** _____

SHOW PASS REQUIRED IF NOT A MEMBER - pay \$45 on entry.

Membership can be obtained at show.

*****USDF GROUP, PARTICIPATING OR BUSINESS NUMBER:** _____

NON-MEMBER FEE REQUIRED IF NOT A MEMBER - pay \$35 on entry. Membership can be obtained at show.

CDS MEMBERSHIP NUMBER: _____

Proof needed to report number

TRAINER (SAME O.K. IF NO CHANGE FROM RIDER) (Adult on grounds who is responsible for horse)

Name: _____

Address: _____

City: _____ **State:** _____ **Zip:** _____

Phone: _____

EMAIL: _____

***USEF MEMBERSHIP NUMBER:** _____

SHOW PASS REQUIRED IF NOT A MEMBER - pay \$45 on entry.

Membership can be obtained at show.

COACH INFORMATION

Name: _____

***USEF MEMBERSHIP NUMBER:** _____

SHOW PASS REQUIRED IF NOT A MEMBER - pay \$45 and include current address on entry. Membership can be obtained at show.

Class Numbers

Add AA, JR, YR, O - will be entered in O if not designated.

Add "Q" and \$15 for GrtAmericanIns/USDF Q, if applicable

USEF Amateur card MANDATORY to show as AA

**TOTAL
CLASS
FEES:**

FRIDAY			
SATURDAY			
SUNDAY			

\$

Transfer to
FEE
COLUMN

*Freestyle: Send proof of 60% of highest test of the level
USDF Q: Must have appropriate memberships and horse registrations*

STABLING INFORMATION

Reserve one stall (see fees).....

Reserve tack stall (see fees).....

Reserve grooming stall (see fees).....

Note: separate signed entries must be submitted for non-competing horses.
Stable with:

Person responsible on grounds AND phone:

IT IS REQUIRED BY USDF, USEF, CDS THAT YOU ENCLOSE PROOF OF ALL MEMBERSHIPS AND HORSE REGISTRATIONS

FEES (first four fees are mandatory unless cross-entry in CDI)

USEF D&M(\$15 plus Administration (\$8)) **\$23.00**

CDFA - @\$5/horse **\$ 5.00**

CDS Travel Grant - @\$3/horse **\$ 3.00**

Office Fee **\$36.50**

CLASS FEES: Transfer amount from Class Numbers

STALL FEES: Transfer amount from Stabling Information

BEDDING @\$10/BALE

HAY (specify type) @\$30/bale

Haul-in Fee @\$35/horse/day for horses not stabled

ORGANIZATION FEES (If Necessary)

*USEF Show Pass@\$45

**USDF Non-member fee @\$35 (Rider and Owner)

**USDF HID - @\$35

MISCELLANEOUS

CDS Junior Donation

Region VII Donation

Sponsorship \$100 National Class or \$150 FEI class

VIP Table for 6 @\$500

Non-competing horse @\$50/horse (if stabled)

Non-competing horse @\$100 (if haul-in)

TOTAL TO BE PAID:

Check payable to: Golden State Dressage, Inc. **OR**

Credit Card: VISA, MC (circle which one) **Date Exp.**

Card No:

Name on Card:

Zip Code **Security Code**

ENTRY AGREEMENT - ALL PROVISIONS APPLY

Owner/agent/participant agrees that show management is merely providing STABLING for the convenience of the participant and that management, the sponsoring organizations and the facility shall have no responsibility whatsoever for any injury, loss, damage, etc., as a result of using said stabling. Owner/agent/participant agrees to indemnify, defend, and hold all sponsoring and recognizing organizations, show management, their officials, officers, directors, employees, agents, personnel, volunteers harmless from any loss, damage or claims as a result of said use. Owner/agent/participant assumes all care, custody, and control with regard to this use. Owner/agent/participant agrees that every horse entered or which they bring to the show grounds will be subject to the rules of the horse show management but that neither the horse show management nor any sponsoring organization will, in any case, be responsible for damages as a result of any loss, damage or claim that may occur. They agree to defend, indemnify and hold the horse show facility, horse show management, their directors, officers, officials and/or volunteers and affiliated organizations harmless therefrom.

I hereby agree to release, indemnify and hold harmless USDF, its instructors, officers, directors, agents, and volunteers from and against any and all loss, liability or damage arising from or because of, or in connection with, participation in this competition or related activities. I also hereby agree to release, indemnify and hold harmless the show management, show committee and members, officers, directors, agents, and volunteers from and against any and all loss, liability or damage arising from or because of, or in connection with, participation in this competition or related activities.

FEDERATION ENTRY AGREEMENT

By entering a Federation-licensed Competition and signing this entry blank as the Owner, Lessee, Trainer, Manager, Agent, Coach, Driver, Rider, Handler, Vaultor or Longeur and on behalf of myself and my principals, representatives, employees and agents, I agree that I am subject to the Bylaws and Rules of The United States Equestrian Federation, Inc. (the "Federation") and the local rules of Golden State Dressage and Murieta Equestrian Center, I agree to be bound by the Bylaws and Rules of the Federation and of the competition. I will accept as final the decision of the Hearing Committee on any question arising under the Rules, and agree to release and hold harmless the competition, the Federation, their officials, directors and employees for any action taken under the Rules. I represent that I am eligible to enter and/or participate under the Rules, and every horse I am entering is eligible as entered. I also agree that as a condition of and in consideration of acceptance of entry, the Federation and/or the Competition may use or assign photographs, videos, audios, cable - casts, broadcasts, internet, film, new media or other likenesses of me and my horse taken during the course of the competition for the promotion, coverage or benefit of the competition, sport, or the Federation. Those likenesses shall not be used to advertise a product and they may not be used in such a way as to jeopardize amateur status. I hereby expressly and irrevocably waive and release any rights in connection with such use, including any claim to compensation, invasion of privacy, right of publicity, or to misappropriation. The construction and application of Federation rules are governed by the laws of the State of New York, and any action instituted against the Federation must be filed in New York State. See GR908.4

FEDERATION RELEASE, ASSUMPTION OF RISK, WAIVER AND INDEMNIFICATION

This document waives important legal rights. Read it carefully before signing.

I AGREE in consideration for my participation in this Competition to the following:

I AGREE that "the Federation" and "Competition" as used herein includes the Licensee and Competition Management, as well as all of their officials, officers, directors, employees, agents, personnel, volunteers and Federation affiliates.

I AGREE that I choose to participate voluntarily in the Competition with my horse, as a rider, driver, handler, vaultor, longeur, lessee, owner, agent, coach, trainer, or as parent or guardian of a junior exhibitor. I am fully aware and acknowledge that horse sports and the Competition involve inherent dangerous risks of accident, loss, and serious bodily injury including broken bones, head injuries, trauma, pain, suffering, or death. ("Harm").

I AGREE to hold harmless and release the Federation and the Competition from all claims for money damages or otherwise for any Harm to me or my horse and for any Harm of any nature caused by me or my horse to others, even if the Harm arises or results, directly or indirectly, from the negligence of the Federation or the Competition.

I AGREE to expressly assume all risks of Harm to me or my horse, including Harm resulting from the negligence of the Federation or the Competition.

I AGREE to indemnify (that is, to pay any losses, damages, or costs incurred by) the Federation and the Competition and to hold them harmless with respect to claims for Harm to me or my horse, and for claims made by others for any Harm caused by me or my horse while at the Competition. I have read the Federation Rules about protective equipment, including GR801 and, if applicable, EV114, and I understand that I am entitled to wear protective equipment without penalty, and I acknowledge that the Federation strongly encourages me to do so while **WARNING** that no protective equipment can guard against all injuries. If I am a parent or guardian of a junior exhibitor, I consent to the child's participation and **AGREE** to all of the above provisions and **AGREE** to assume all of the obligations of this Release on the child's behalf.

I represent that I have the requisite training, coaching and abilities to safely compete in this competition.

I AGREE that if I am injured at this competition, the medical personnel treating my injuries may provide information on my injury and treatment to the Federation on the official USEF accident/injury report form.

BY SIGNING BELOW, I AGREE

to be bound by all applicable Federation Rules, the rules of this competition and all terms and provisions of this entry blank and all terms and provisions of this Prize List. If I am signing and submitting this Agreement electronically, I acknowledge that my electronic signature shall have the same validity, force and effect as if I affixed my signature by my own hand.

MANDATORY - Sign all 3 spaces - EVEN IF SAME PERSON

RIDER/DRIVER/HANDLER/VAULTOR/LONGEUR

1.) Signature: _____

Print Name: _____

Is Rider a U.S. Citizen: (Please circle): Yes No

OWNER/AGENT

2.) Signature: _____

Print Name: _____

Is Owner a U.S. Citizen: (Please circle): Yes No

TRAINER: Adult on grounds with responsibility for the horse.

3.) Signature: _____

Print Name: _____

SIGN THE FOLLOWING IF APPLICABLE

COACH Signature: _____

Print Name: _____

PARENT/GUARDIAN Signature - (Required if Rider/Driver/Handler is a minor): _____

MANDATORY: Emergency Contact

Phone No.



EXHIBIT "B"

MURIETA EQUESTRIAN CENTER ASSUMPTION OF RISK AND WAIVER

For valuable consideration and to induce permission to participate in equestrian activities held at Murieta Equestrian Center ("MEC"), 7200 Lone Pine Drive, Rancho Murieta, CA 95683, each of the undersigned agrees to the following terms and makes the following warranties:

I acknowledge that participating in equestrian activities, whether as a show participant or an audience member, is a HAZARDOUS RECREATION ACTIVITY with RISK of damage or PERSONAL INJURY, including PARALYSIS OR DEATH, to any person or property. Equines have the propensity to behave in ways that may result in injury, harm, or death to persons on or around the equine; have unpredictable reactions to such things as sounds, sudden movement, and unfamiliar objects, persons, or other animals; are susceptible to certain hazards such as surface or subsurface conditions, collisions with other equines or objects; propensities include kicking, biting, stamping, stumbling, rearing, and others; tack equipment can fail resulting in falling or loss of control; and activities have the potential of the participant(s) to act in a negligent manner that may contribute to injury to the participant or others, such as failing to maintain control over the equine or not acting within the participant's ability. Equine activities are INHERENTLY DANGEROUS. I understand this is not a complete description of all risks and that other unknown or unforeseeable hazards and risks of harm may occur.

With this in mind, I accept full responsibility for my own safety and EXPRESSLY ASSUME ALL RISKS OF HARM, whether foreseen or unforeseen while participating in equestrian activities at the Murieta Equestrian Center. **I am physically fit and know of no medical or health reason why I should not participate in this activity.**

I hereby RELEASE and agree to DEFEND, INDEMNIFY AND HOLD HARMLESS MEC, Cosumnes Corporation, their shareholders, officers, employees, agents, instructors, equipment manufacturers, lessors, and insurers (hereinafter collectively referred to as "Parties Released"), from and against any liability, demand, claim, or right of action for any damage or injury, including paralysis or death, to any person or property, even if such damage or personal injury results from the NEGLIGENCE of MEC or other Parties Released. I further COVENANT NOT TO SUE or make any demand or claim against MEC or other Parties Released, for or by reason of any such damage or personal injury from my participation in equestrian activities at MEC. I will pay all fees, damages, and costs, including attorney fees that MEC or other Parties Released may incur in the enforcement of this agreement.

A signed liability waiver is a condition to your participation in any event. Failure to sign will lead to your disqualification and removal from property.

I have carefully read this document and fully understand its contents, which I adopt as a completely integrated and exclusive statement of the entire terms of agreement.

SIGNATURE:

E-Mail Address:

ADDRESS:

CITY

STATE / ZIP

TELEPHONE NUMBER

CELLULAR TELEPHONE NUMBER

Guardian Representation:

If I am a PARENT or GUARDIAN of any minor person under 18 years of age participating in equestrian activities at MEC, I make these representations and agree to the terms of this Assumption of Risk and Waiver on behalf of each minor, as well as myself, and I agree to assume responsibility for their safety. I further agree to DEFEND, INDEMNIFY AND HOLD HARMLESS MEC, Cosumnes Corp., and the other Parties Released from and against any demand, claim, right of action, or suit that may be brought on behalf of any such minor(s) arising from equestrian activities at Murieta Equestrian Center. I will pay all fees, damages, and costs, including attorney fees that MEC or other Parties Released may incur in the enforcement of this agreement. My child is physically fit and I know of no medical or health reason why they should not participate in this activity. I intend this agreement to bind me and my family, my assigns, estate, heirs, and personal representatives. This contract is severable and shall be interpreted and enforced under the laws of the State of California.

I have carefully read this document and fully understand its contents, which I adopt as a completely integrated and exclusive statement of the entire terms of agreement.

PRINT FULL NAME OF MINOR CHILD

PRINT PARENT/GUARDIAN FULL NAME

MINOR CHILD DOB

ADDRESS

CITY/ZIP

PARENT/ GUARDIAN SIGNATURE

DATE

EMERGENCY TELEPHONE NUMBERS

EVENING/ WEEKEND NUMBER



EXHIBIT "D"
MURIETA EQUESTRIAN CENTER
FACILITY POLICIES

*Please comply with these policies with your clients, family and friends.
The staff at MEC wishes you a safe and successful event!*

1. Water is metered, please use this precious resource wisely
2. All garbage and manure must be placed in appropriate disposal areas
3. Horses must only be washed in wash racks
4. Dogs must be on leash at all times and are not permitted in the food service areas, concessions or bleachers. Proof of rabies vaccination for all Dogs brought to the Facility is required
5. When stabling at MEC, please bring a water bucket and hose. Please do not empty your water buckets in the stall at the end of the show.
6. All participants are responsible to sign a liability release with show management
7. Parking permitted ONLY in designated areas only (please be aware of fire and emergency access). ALL HORSE TRAILERS & RV's must be parked in designated parking areas. There will be no trailers permitted in the barn isles, including the side and front of the barns; show management is responsible for enforcing and reinforcing this rule throughout the show.
8. Advertisements and flyer postings are ONLY allowed on the designated "posting board" located at the main indoor arena
9. All RV's or living quarters are subject to fees. A "fees paid" sticker will be issued and must be visible to MEC personnel in the window of the vehicle
10. No entrance into designated areas marked "PRIVATE". Please be extra courteous to our resident clients, guests, patrons and horses
11. A current Driver's License is required for ANY motorized vehicle being operated on grounds. This includes children on motorized skate boards, scooters or golf carts
12. Trailer-in exhibitors must refrain from emptying all manure from their trailers in the parking areas.
13. For your safety, please lock all vehicles at all times while at the show. MEC is not responsible for lost or stolen items or damaged vehicles.